

The change of stress distribution on the condyle after mandibular setback surgery

Koichiro Ueki, Kiyomasa Nakagawa, Shigeyuki Takatsuka and Etsuhide Yamamoto

Department of Oral and Maxillofacial Surgery, School of Medicine, Kanazawa University, Japan

SUMMARY The rigid-body spring model (RBSM) theory was incorporated into a model as a discrete method for analysing problems of limit, such as the stress distribution on the condyle. The purpose of this study was to evaluate the two-dimensional RBSM for determining stress on the temporomandibular joint (TMJ) in patients after orthognathic surgery. Thirty-two patients (five males and 27 females, mean age 21.4 ± 4.9 years) with mandibular prognathism underwent bilateral sagittal split ramus osteotomy (SSRO) and setback; 48 subjects were recruited as controls. Anatomical landmarks were traced from pre- and post-operative lateral cephalograms and the information was processed using the Fortran analysis program. The force vector on the condyle, its degree, its direction, and the displacement co-ordinates (x , y) and rotation (θ) at the gonial angle were calculated.

When muscular power was assumed to be 1, the post-operative degree of the force vector was higher than the pre-operative value ($P < 0.05$). The X co-ordinate, x , and rotation, θ , of the displacement vector in the pre-operative patients with mandibular prognathism were significantly higher than those in the control subjects ($P < 0.05$). There were still significant differences between the displacement values post-operatively between the patients and controls ($P < 0.05$).

The results suggest that the degree and direction of the force vector and the resulting displacement co-ordinates can be used as parameters in a surgical model. The RBSM may also be useful in evaluating the pre- and post-operative skeletal morphology of jaw deformities.

Introduction

Generally, post-operative mandibular position after orthognathic surgery is determined by a standard surgical model, photographs, a lateral cephalogram, and a prediction tracing. Advanced simulation surgery uses geometric information from three-dimensional (3D) computed tomography as well as lateral cephalograms to determine the positions of the proximal and distal bone segments after sagittal split ramus osteotomy (SSRO; Xia *et al.*, 2000). However, it has been reported that the positioning of the segments is determined by dynamic factors that place considerable stress on the temporomandibular joint (TMJ). O’Ryan and Epker (1984) demonstrated that different skeletal patterns represent different load characteristics on the TMJ. They found that the functional load patterns in these cases were significantly different from each other. If the function of the TMJ differs with different skeletal patterns, it is likely that the structure of the TMJ also differs. However, their study examined only the trabecular pattern of the condyle; no dynamic analysis was performed. Changes in stress on the condyle as a result of orthognathic surgery on the mandible may frequently cause condylar deformation.

Several theoretical approaches have been used in an attempt to understand various aspects of TMJ biomechanics (Koolstra *et al.*, 1988; Koriath and Hannam, 1990; Chen and Xu, 1994; Tanaka *et al.*, 1994; DeVocht *et al.*, 1996;

Tanne *et al.*, 1996). Some finite element models (FEMs) of the TMJ have been developed to simulate condylar motion or stress change. However, the geometry of the FEM was based on only one typical image of the TMJ, while in fact data on many material properties were needed. For this reason, FEM was inadequate as a technique for investigation. Instead, a stress distribution analysis method using the rigid-body spring model (RBSM) was employed because many individual images had to be analysed to provide a more comprehensive biomechanical description of the loading and the results had to be suitable for statistical analysis. Finally, the amount of data collected was rather large and simple analysis was required.

The purpose of the present study was to examine stress distribution on the condyle after orthognathic surgery (SSRO and mandibular setback) using the 2D RBSM.

Subjects and methods

Thirty-two patients (five males and 27 females, mean age 21.4 ± 4.9 years) with mandibular prognathism (ANB less than 2 degrees without asymmetry) and no apparent radiographic morphological TMJ changes underwent SSRO and setback using a modified Obwegeser–Dal Pont procedure (Dal Pont, 1967). No devices for repositioning the proximal segment were used and titanium miniplates

were applied for fixation. The mean setback was 6.7 ± 3.0 mm on the right side and 6.3 ± 2.9 mm on the left side. All patients received orthodontic treatment before and after surgery. Although, post-operative cephalogram was usually taken immediately following surgery and after 1, 3, 6, and 12 months, gonion was comparatively stable from 3 to 12 month for all subjects. Therefore, lateral cephalograms pre-operatively and 3 months post-operatively were used.

Forty-eight subjects (28 males and 20 females, mean age 24.0 ± 1.7 years) with normal skeletal relationships and occlusions served as the controls. Subjects with any maxillary skeletal anomaly were not included. Informed consent was obtained from the patients and the control volunteers, and the study was approved by Kanazawa University Hospital.

The RBSM program of the TMJ

The geometry of the model was based on a lateral cephalogram of each subject (Figure 1A). The gonial angle of the mandible was selected as the muscular stress generation point and the distal portion of the first molar as the occlusal stress generation point (Figure 1B). The stress-bearing points on the mandibular condyle were represented by approximation curves generated from the most anterior, superior, and posterior points on the condyle. Data from the lateral cephalograms were entered into a computer (model PC9821Xa13, NEC, Tokyo, Japan) and a Fortran program was used to analyse the mandibular 2D RBSM (Takeuchi *et al.*, 2002).

After surgery, the bone fragments were considered to be rigidly fixed so that the entire mandible could be considered as a single unit for analysis.

Calculations

The value of the total load, the resultant force vector of power (P_m) generated by the masticatory muscle, was defined as 1 for the calculations. This force vector was placed on the gonial angle point. Simultaneously, the values of the direction vector (Ph angle), the degree of the resultant force vector (Ph) on the condyle, and the displacement vector (x, y) and rotation (θ) on the mandibular body were also calculated. The resultant force vector of muscular power was different from the displacement vector, although both vectors appeared to be in the same place on the gonial angle. The displacement vector has the co-ordinate conversion vector in this calculation process.

The software program was modified so that the results of the simulation could be seen as an image on a personal computer (Figure 2) and pre- and post-operative results using this program could be compared as images (Figure 3). The analysis was based on the definition that a condylar position is stable when the stress is distributed equally over the condylar surface. When the final calculation has been performed and contact pressure is distributed equally over the condylar surface, any slight mandibular displacement may be disregarded. The displacement from vectors on the initial mandibular position to vectors on the final mandibular position after calculations can be presented by conversion calculations from the displacement vector. This may mean that the higher the displacement vector, the less clinically stable are the mandible and TMJ.

As previously stated, the displacement vector is expressed in terms of three degrees of freedom at the point of the gonial angle: the co-ordinates that represented the displacement distance (x, y) and the rotation angle (θ). The

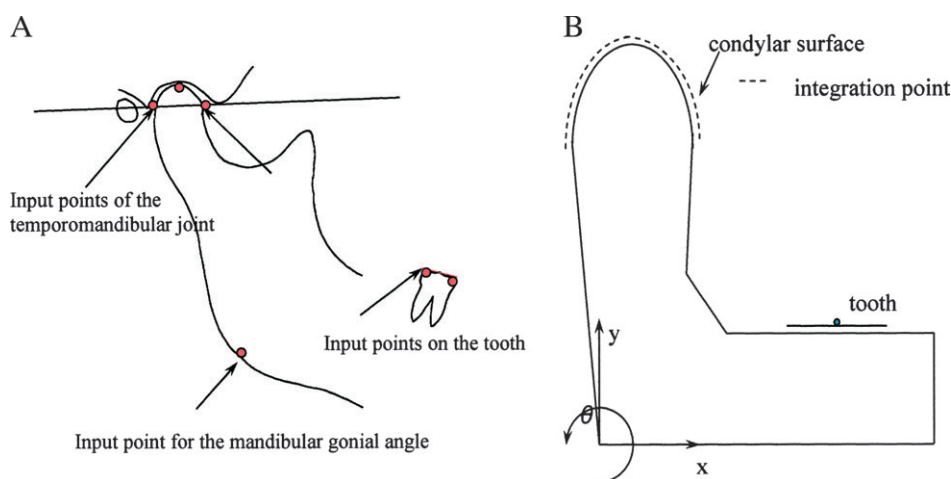


Figure 1 Data from lateral cephalograms. (A) The distal portion of the first molar, the gonial angle, and the condylar surface in the articular fossa were traced and the data were entered into the computer program. (B) The gonial angle was selected as the reference point for the variables of the three degrees of freedom: parallel displacement (x, y) and rotation (θ). The reaction force on the teeth is assumed to act on the molars, especially on the first molar, so the distal portion of the first molar was selected as the occlusal stress generation point. The integral points for calculating the contact stress were determined along the condylar contour.

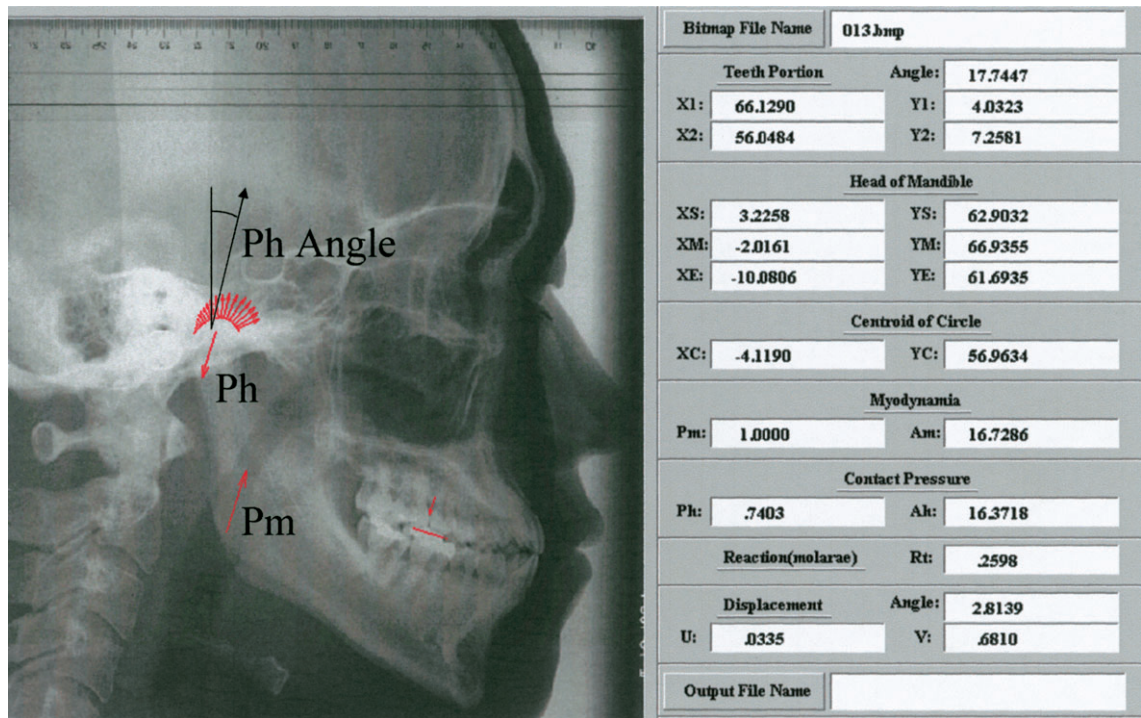


Figure 2 Visualization of the results of analysis with the rigid-body spring model. Ah, direction of resultant force vector; Ph, degree of resultant force vector; Pm, muscular power. Arrows on the condylar surface indicate relative stress on the integral points. U, V, and Angle represent the displacement vector (x, y) and (θ).

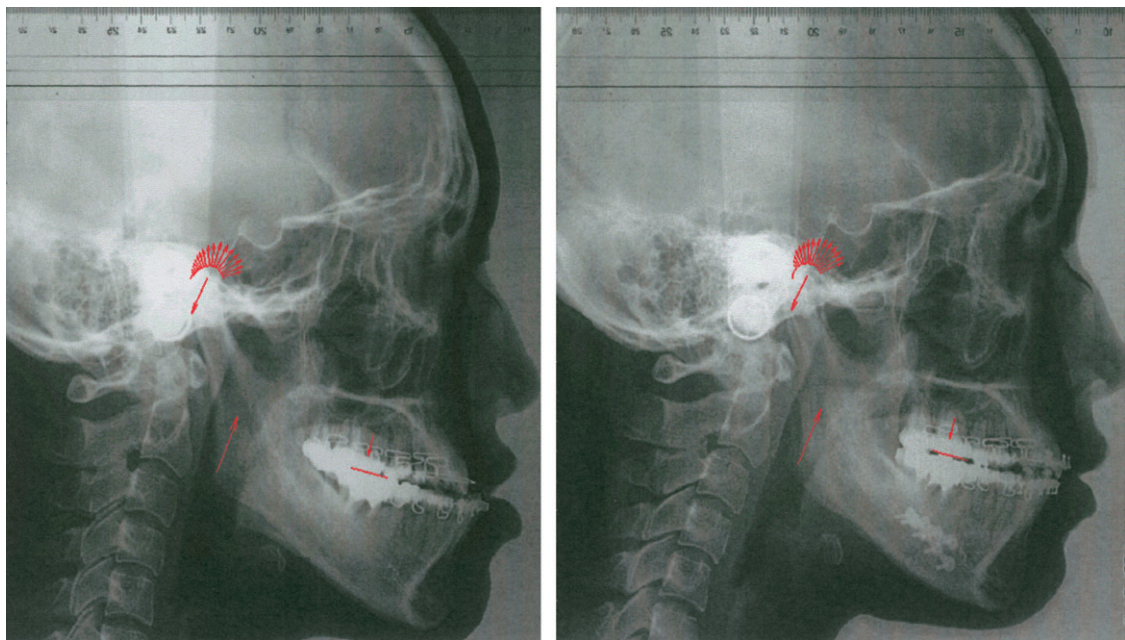


Figure 3 The pre- and post-operative results on cephalograms. The mandibular body, including the dentition, was shortened by sagittal split ramus osteotomy and fixed by miniplates.

pre- and post-operative positions of the condyle in the patients were compared with those of the control subjects with respect to the components of the direction (Ph angle), the degree of the resultant stress vector (Ph), and the

displacement vector (x, y) and rotation (θ). Because the standard cephalogram was not taken parallel to the condylar long axis, the recorded image does not represent the condylar surface accurately. Therefore, the points on the condyle

were replaced with approximation curves that were assumed to be the most appropriate for visualization. The outline of the condyle was traced as a circle containing the most anterior, superior, and posterior points on the condyle before the stress distribution analysis was carried out. Finally, the elliptical shape of the condylar surface was retained with the longitudinal axis aligned to the direction of the resultant force vector (Takeuchi *et al.*, 2002).

Statistical analysis

Statistical analyses of Ph, Ph angle, and x , y , and θ between pre- and post-operative patients were performed with the Wilcoxon signed ranks test on the Stat View™ 4.5 software program (Abacus Concepts, Inc., Berkeley, California, USA). Differences in vectors between the control subjects and the patients pre- and post-operatively were analysed with the Mann–Whitney U -test. As it was unclear whether these values were normally distributed, a non-parametric analysis was used. The differences were considered significant at $P < 0.05$.

Results

The degree of the force vector (Ph angle) on the condyle was 21.04 ± 5.59 degrees in the control subjects and for the pre- and post-operative patients 23.3 ± 7.76 and 23.30 ± 7.75 degrees, respectively. No significant difference was noted between the pre- and post-operative values.

The mean value of the resultant force vector (Ph; Figure 4) pre-operatively was 0.615 ± 0.056 and post-operatively 0.653 ± 0.062 , a significant difference ($P < 0.05$). The value in the post-operative patients was the same as that in the control subjects (0.653 ± 0.052). For these calculations, the value of the resultant force vector of muscular power was defined as 1.

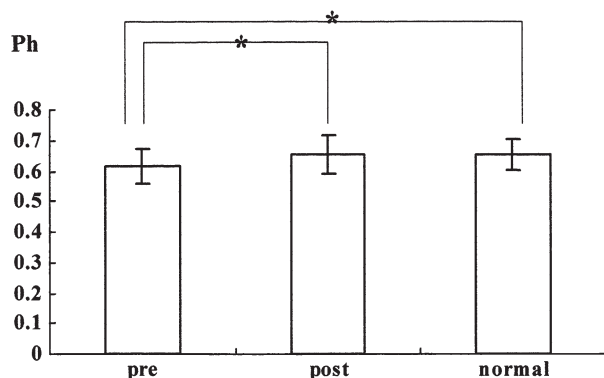


Figure 4 Statistical analysis of the resultant force vector. The value of the resultant force vector in the pre-operative patients is significantly smaller than that in the control subjects. There is no significant difference between the value of the resultant force vector in the post-operative patients and that in the control subjects. $*P < 0.05$. Column presents average and the error bar shows standard deviation.

The value of the X co-ordinate component, x , of the displacement vector was highest (0.104 ± 0.068) pre-operatively. Post-operatively, it was 0.069 ± 0.069 and in the control subjects 0.039 ± 0.136 . A significant difference was noted between the groups in the value x of the displacement vector ($P < 0.05$). The value of the Y co-ordinate component, y , of the displacement vector was 0.653 ± 0.115 , 0.703 ± 0.095 , and 0.666 ± 0.092 for the patients pre- and post-operatively and for the controls subjects, respectively. There was no significant difference among the groups in y value. The value of the rotation component, θ , of the displacement vector was highest (9.337 ± 6.352) in the patients pre-operatively. Post-operatively, it was 5.495 ± 6.156 and for the control subjects 1.699 ± 4.935 . There was a significant difference between the groups in the value of the rotation component, θ , of the displacement vector. These results suggest that the value for the condyle in the control subjects was stable (Figure 5).

Discussion

When fixing bone fragments after SSRO, displacement of the proximal bone fragment, including the condyle, results in a change of condylar location relative to the glenoid fossa. This might be a result of continuous loading on the TMJ (Leonard, 1976; Will *et al.*, 1984; Hiatt *et al.*, 1988; Lindqvist and Soderholm, 1988; Raveh *et al.*, 1988; Proffit *et al.*, 1991; Rotskoff *et al.*, 1991). In order to prevent this continuous loading, it has been advocated that the proximal bone fragment should be restored to its pre-operative condition three-dimensionally (Paulus and Steinhauser, 1982; Epker and Wylie, 1986; Schweska *et al.*, 1990; Rotskoff *et al.*, 1991). However, as dynamic factors might be more important than the geometric position of the condyle, the stress distribution analysis system, RBSM, was developed (Takeuchi *et al.*, 2002; Ueki *et al.*, 2005).

This study examined all surgical cases where growth was judged to have ceased. However, when this analysis is used for young patients during growth, it may be also useful for predicting condylar growth.

For the Ph angle (stress angulation on the condyle), as there was no significant difference between the controls or the patients pre- and post-operatively, the Ph angle could not be used as a parameter of surgical simulation. However, maxillary morphological variation of subjects might affect this result. In future studies, more accurate selection should be performed.

An increase in the relative load on the condyle after SSRO and mandibular setback was seen in this study; however, this was only a relative value. In this investigation, the muscular force value was assumed to be 1 so that incorporating real maximum occlusal force data would make these results more apparent and meaningful. However, the direction of the resultant force vector derived from the stress distribution could still be obtained by this method so that it could be evaluated statistically.

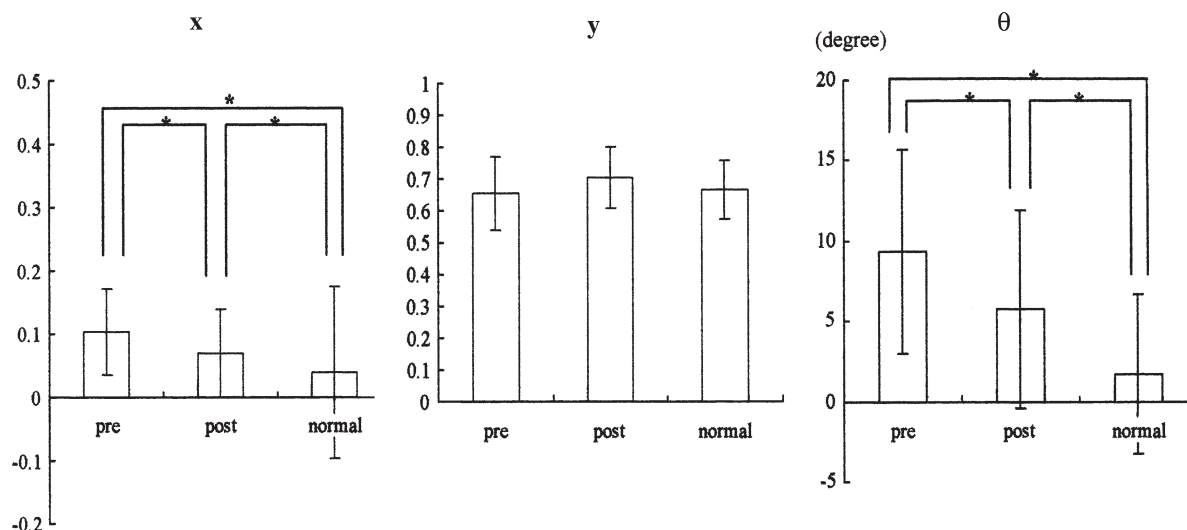


Figure 5 Statistical analysis of the displacement vector. Significant differences are noted between groups. * $P < 0.05$. Column presents average and the error bar shows standard deviation.

The X co-ordinate component, x , of the displacement vector represented the highest value in the pre-operative mandibular prognathic cases. Even though the strength of the X co-ordinate component, y , of the displacement vector decreased after surgery, it was still significantly greater than that in the control subjects. The rotation value, θ , in patients also decreased after surgery, but was still greater than that in the control subjects. The displacement vector post-operatively still differed from that of the control subjects. These results may be closely associated with the type of surgical procedure as well as with mandibular morphology. It was assumed that the SSRO method could change only the position of the distal segment of the mandible, including the teeth, and that TMJ morphology would not alter, although a slight change in condylar position might be induced. In other words, it was considered that as a result of surgery to correct prognathism, patients had acquired a normal mandibular morphology with prognathic TMJ morphology, although TMJ remodelling could be induced subsequently. On the other hand, in the Y co-ordinate component, y , of the displacement vector, there was no significant difference among the groups. This result suggests that the setback movement was mainly in the antero-posterior direction, along the X co-ordinate.

The RBSM theory was incorporated into a model devised as a discrete method for analysing R-R-type-interface (the two bodies bonded by an interface are both rigid) problems. This theory assumes that an element itself is a rigid body, and the model represents a calculation method to measure the concentration of energy by the force exerted on a bundle of springs distributed along the boundary of the element. The RBSM and the FEM calculation showed good agreement in contact pressure prediction (Li *et al.*, 1997). Compared with the FEM, which is commonly used in the field of

dentistry (Chen and Xu, 1994; Tanaka *et al.*, 1994; DeVocht *et al.*, 1996; Tanne *et al.*, 1996), the RBSM theory is superior because the calculation can be carried out easily and rapidly with limited information. The FEM is suitable for calculating stress within elements, while the RBSM theory is used for calculating the surface force between elements. This theory has been used to analyse stress on the knee, hip, and wrist in the field of orthopaedic surgery (Genda *et al.*, 1995; Schuind *et al.*, 1995). These studies prove that RBSM can provide reliable results. On the other hand, the structure of the TMJ is significantly different from that of the knee or hip joint and its characteristic anatomy and movement make it difficult to manage the data.

In the present study, the distal portion of the first molars was used for the reference points. Pruim *et al.* (1980) observed that the maximum bite force that can be produced on the third molar is less than that on the first molar. However, in this model, as the centre position of total bite force, the point between the first and second molar was calculated and determined. Furthermore, antero-posterior movement of the first molar by orthodontic treatment was so small that the point could demonstrate the movement of the distal segment by SSRO.

Regarding gonion as a reference point, it was unclear whether gonion point remained stable after surgery. It is generally accepted that the morphology of the gonial angle changes after setback surgery. This may be due to mandibular angle remodelling and the osteotomy line. However, muscular attachment also changes and is accompanied by morphological alteration at the mandibular angle (Song and Park, 1997). In fact, tension in the pterygomasseteric sling by the posterior part of the distal segment following setback surgery could induce the relapse (Rodriguez and Gonzalez, 1996). Therefore, it was considered that the use of gonion

point was reasonable as the generated point of muscle power. Even if gonion point changes after surgery, analysis is possible by using gonion point on the post-operative cephalogram.

The condylar surface outline was approximated as a circle that passed through the most anterior, superior, and posterior points on the condyle. The condylar surface was then approximated as an ellipse with the longitudinal axis aligned with the direction of the resultant force vector after stress distribution analysis. A higher degree of stress was noted on the anterior aspect of the condyle. The narrowest part, between the centre of the articular disc and the centre of the posterior slope of the articular eminence, has been suggested to be the path of the resultant force vector. This hypothesis is validated by reports that the articular cartilage is thickest at the anterior slope of the condyle and the posterior slope of the articular eminence. Furthermore, load-enhancing glycosaminoglycan has been identified at the centre of the articular disc (Kopp, 1976; Blaustein and Scapino, 1986). This finding supports results previously obtained using FEM (Tanaka *et al.*, 1994; Tanne *et al.*, 1996) and RBSM (Ueki *et al.*, 2005).

There is no consistent value for the optimal load on the TMJ. Smith *et al.* (1986) found that TMJ loads in a numerical model varied from 5 to 60 per cent of the bite force. However, because it is impossible to measure the actual load on the human TMJ, this value can only be estimated by analysis of a model based on mathematical calculations. The load on the condyle was also estimated in the present study. However, multiple stress-releasing structures, such as the interpositional disc, the articular cartilage, and the periodontal ligament, were not taken into account. Therefore, if the occlusal load and the stress-releasing capacity of the TMJ could be accurately measured, estimation of the stress on the TMJ would be more realistic with this system. The results of displacement suggest that the condyles of subjects with normal skeletal relationships and occlusions are dynamically more stable than those of subjects with mandibular prognathism. The findings also suggest that the displacement vector (x , y) and rotation θ can be used as a parameter in the surgical model. The application of the RBSM is useful and the calculations may be quickly performed. Furthermore, this method enables direct assessment of a patient in the clinic, which is not possible with the FEM. However, lateral cephalogram could reflect just antero-posterior relation, so that this analysis could not be used for asymmetric patients.

Conclusion

The results of this study suggest that the degree and direction of the force vector and the resulting displacement coordinates can be used as parameters in a surgical model. The RBSM may also be useful in evaluating the pre- and post-operative skeletal morphology of jaw deformities.

Although the RBSM appears promising, further studies are needed to determine the strengths and weaknesses of this analytical method.

Address for correspondence

Koichiro Ueki
Department of Oral and Maxillofacial Surgery
School of Medicine
Kanazawa University
13-1 Takaramachi
Kanazawa 920-8941
Japan
E-mail: kueki@med.kanazawa-u.ac.jp

Acknowledgement

We wish to thank Dr N. Takeuchi of the Department of Civil Engineering, Hosei University, and Dr T. Kawai of the Department of Electrical Engineering, Science University of Tokyo, for their co-operation in programming the dynamic analysis system to use the RBSM.

References

- Blaustein D I, Scapino R P 1986 Remodeling of the temporomandibular joint disk and posterior attachment in disk displacement specimens in relation to glycosaminoglycan content. *Plastic and Reconstructive Surgery* 78: 756–764
- Chen J, Xu L 1994 A finite element analysis of the human temporomandibular joint. *Journal of Biomechanical Engineering* 116: 401–407
- Dal Pont G 1967 A new method of intermaxillary bone fixation. *Transactions of the International Conference on Oral Surgery*, pp. 325–329
- DeVocht J W, Goel V K, Zeitler D L, Lew D 1996 A study of the control of disc movement within the temporomandibular joint using the finite element technique. *Journal of Oral and Maxillofacial Surgery* 54: 1431–1437
- Epker B N, Wylie G A 1986 Control of the condylar-proximal mandibular segments after sagittal split osteotomies to advance the mandible. *Oral Surgery, Oral Medicine, and Oral Pathology* 62: 613–617
- Genda E, Konishi N, Hasegawa Y, Miura T 1995 A computer simulation study of normal and abnormal hip joint contact pressure. *Archives of Orthopaedic and Trauma Surgery* 114: 202–206
- Hiatt W R, Schelkun M, Moore D L 1988 Condylar positioning in orthognathic surgery. *Journal of Oral and Maxillofacial Surgery* 46: 1110–1112
- Koolstra J H, van Eijden T M, Weijs W A, Naeije M 1988 A three-dimensional mathematical model of the human masticatory system predicting maximum possible bite forces. *Journal of Biomechanics* 21: 563–576
- Kopp S 1976 Topographical distribution of sulphated glycosaminoglycans in human temporomandibular joint disks. A histochemical study of an autopsy material. *Journal of Oral Pathology* 5: 265–276
- Korioto T W, Hannam A G 1990 Effect of bilateral asymmetric tooth clenching on load distribution at the mandibular condyles. *Journal of Prosthetic Dentistry* 64: 62–73
- Leonard M 1976 Preventing rotation of the proximal fragment in the sagittal ramus split operation. *Journal of Oral and Maxillofacial Surgery* 34: 942
- Li G, Sakamoto M, Chao E Y 1997 A comparison of different methods in predicting static pressure distribution in articulating joints. *Journal of Biomechanics* 30: 635–638

- Lindqvist C, Soderholm A L 1988 A simple method for establishing the position of the condylar segment in sagittal split osteotomy of the mandible. *Plastic and Reconstructive Surgery* 82: 707–709
- O’Ryan F, Epker B N 1984 Temporomandibular joint function and morphology: observations on the spectra of normalcy. *Oral Surgery, Oral Medicine, and Oral Pathology* 58: 272–279
- Paulus G W, Steinhäuser E W 1982 A comparative study of wire osteosynthesis versus bone screws in the treatment of mandibular prognathism. *Oral Surgery, Oral Medicine, and Oral Pathology* 52: 2–6
- Proffit W R, Phillips C, Dann IV C, Turvey T A 1991 Stability after surgical-orthodontic correction of skeletal Class III malocclusion. I. Mandibular setback. *International Journal of Adult Orthodontics and Orthognathic Surgery* 6: 7–18
- Pruim G J, de Jongh H J, ten Bosch J J 1980 Forces acting on the mandible during bilateral static bite at different bite force levels. *Journal of Biomechanics* 13: 755–763
- Raveh J, Vuillemin T, Ladrach K, Sutter F 1988 New techniques for reproduction of the condyle relation and reduction of complications after sagittal ramus split osteotomy of the mandible. *Journal of Oral and Maxillofacial Surgery* 46: 751–757
- Rodriguez R R, Gonzalez M 1996 Skeletal stability after mandibular setback surgery. *Oral Surgery, Oral Medicine, Oral Pathology, Oral Radiology, and Endodontics* 81: 31–33
- Rotskoff K S, Herbosa E G, Villa P 1991 Maintenance of condyle-proximal segment position in orthognathic surgery. *Journal of Oral and Maxillofacial Surgery* 49: 2–7
- Schuind F, Cooney W P, Linscheid R L, An K N, Chao E Y 1995 Force and pressure transmission through the normal wrist. A theoretical two-dimensional study in the posteroanterior plan. *Journal of Biomechanics* 28: 587–601
- Schwestka R, Engelke D, Kubein-Messenburg D 1990 Condylar position control during maxillary surgery: the condylar positioning appliance and three-dimensional double splint method. *International Journal of Adult Orthodontics and Orthognathic Surgery* 5: 161–165
- Smith D M, McLachlan K R, McCall Jr W D 1986 A numerical model of temporomandibular joint loading. *Journal of Dental Research* 65: 1046–1052
- Song H S, Park C G 1997 Masseter muscle atrophy after ostectomy of the mandibular angle in rabbits. *Plastic and Reconstructive Surgery* 99:51–60
- Takeuchi N, Ueki K, Nakagawa K 2002 Analysis of stress distribution on condyle including the effects of masticatory muscles. Fifth World Congress on Computational Mechanics (<http://www.wccm.tuwien.ac.at/>)
- Tanaka E, Tanne K, Sakuda M 1994 A three-dimensional finite element model of the mandible including the TMJ and its application to stress analysis in the TMJ during clenching. *Medical Engineering and Physics* 16: 316–322
- Tanne K, Tanaka E, Sakuda M 1996 Stress distribution in the temporomandibular joint produced by orthopedic chincup forces applied in varying directions: a three-dimensional analytic approach with the finite element method. *American Journal of Orthodontics and Dentofacial Orthopedics* 110: 502–507
- Ueki K, Nakagawa K, Marukawa K, Takatsuka S, Yamamoto E 2005 The relationship between temporomandibular joint disc morphology and stress angulation in skeletal Class III patients. *European Journal of Orthodontics* 27: 501–506
- Will L A, Joondeph D R, Hohl T H, West R A 1984 Condylar position following mandibular advancement: its relationship to relapse. *Journal of Oral and Maxillofacial Surgery* 42: 578–588
- Xia J *et al.* 2000 Computer-assisted three-dimensional surgical planning and simulation: 3D virtual osteotomy. *International Journal of Oral and Maxillofacial Surgery* 29: 11–17

Copyright of European Journal of Orthodontics is the property of Oxford University Press / UK and its content may not be copied or emailed to multiple sites or posted to a listserv without the copyright holder's express written permission. However, users may print, download, or email articles for individual use.