

Cephalometric standards for Slovenians in the mixed dentition period

Martina Drevenšek*, Franc Farčnik* and Gaj Vidmar**

*Department of Orthodontics and **Institute of Biomedical Informatics, Faculty of Medicine, University of Ljubljana, Slovenia

SUMMARY The aim of this study was to develop standard cephalometric values for Slovenians in the period of the mixed dentition. Eighty-eight children were included in the study (46 girls and 42 boys, mean age 9.31 ± 1.52 years). The selection criteria were: in the mixed dentition, a score of the modified Eismann method for an objective assessment of malocclusion of less than 15 points, the absence of aplasia and supernumerary teeth, no congenital anomalies and no previous orthodontic treatment. Twenty-five cephalometric measurements were performed twice to analyse the size and shape of the craniofacial complex. The reliability of the measurements was assessed by correlation coefficients, regression, and analysis of inter-subject differences; satisfactory results were obtained. The differences between boys and girls and between those in the early and late mixed dentition period were tested with a two-way analysis of variance.

The most pronounced changes between the early and late mixed dentition were observed in the vertical skeletal relationships: a decrease in mandibular inclination, interbasal angle and gonial angle, and an increase in anterior and posterior face height. Sagittal skeletal relationships remained constant from the early to the late mixed dentition. No significant differences were found between the observed developmental stages. Significant differences between genders were found only for anterior and posterior face height, with boys showing larger values ($P \leq 0.001$).

As there were no significant differences between the early and late mixed dentition, the mean measurement values of the total sample can be used as cephalometric standards for Slovenians in the mixed dentition period.

Introduction

Cephalometric analysis is an important part of morphological diagnostic procedures in orthodontics, allowing changes associated with growth and orthodontic treatment to be observed. To diagnose and classify a malocclusion, the measured values of cephalometric parameters are compared with standard values. A large number of cephalometric standards have been developed for adult populations and for children in the period of growth and development (Downs, 1952; Coben, 1955; Ricketts, 1957; Steiner, 1959; Riolo *et al.*, 1974; Broadbent *et al.*, 1975; Hasund, 1977; Burstone *et al.*, 1979; Bishara, 1981; Muretic, 1982; Droschl, 1984; Holdaway, 1984; McNamara, 1984; Haavikko and Rakhamo, 1989; El-Batouti *et al.*, 1994; Hamdan and Rock, 2001).

Differences in the dentofacial relationships of various ethnic groups have been observed (Bishara and Fernandez, 1985; Trenouth *et al.*, 1985, 1999; Bishara *et al.*, 1990; Ben-Bassat *et al.*, 1992; Huang *et al.*, 1998). Cephalometric measurements taken from one population may not be applicable for clinical use in a different population. Knowledge of the normal dentofacial pattern of each ethnic group will ensure improved treatment success and the establishment of optimal facial harmony (Argyropoulos and Sassouni, 1989). Therefore it is important to develop standards for various populations.

In some of the studies, gender differences in cephalometric parameters have been observed (Broadbent *et al.*, 1975; Droschl, 1984; Bishara and Fernandez, 1985; El-Batouti *et al.*, 1994).

The selection criteria of the samples from which standard values were developed differ a great deal. Some researchers have used patients selected on the basis of ideal (Franchi *et al.*, 1998), normal (Taylor and Hitchcock, 1966) and good (Broadbent *et al.*, 1975) occlusion. Droschl (1984) and Hamdan and Rock (2001) included subjects with Class I malocclusions, while Ben-Bassat *et al.* (1992) and El Batouti *et al.* (1994) used subjects with a clinically acceptable normal occlusion and no apparent facial disharmony. Other studies have developed standard values from unselected samples (Ricketts, 1957; Cooke and Wei, 1989).

The shape and size of the craniofacial complex changes with age. The values of cephalometric measurements are also related to age (Riolo *et al.*, 1974; Broadbent *et al.*, 1975; Bishara, 1981; Droschl, 1984; Trenouth *et al.*, 1985; Haavikko and Rakhamo, 1989; El-Batouti *et al.*, 1994). Hence, cephalometric standards should be available for different age groups (El-Batouti *et al.*, 1994). The majority of available standard values are developed according to chronological age, while only a few are established according to dental age. Tollaro *et al.* (1996) prepared floating norms for

assessment of the craniofacial pattern in the primary dentition, and McNamara (1984) published standard values for the period of mixed dentition. Floating norms for the permanent dentition were determined by Segner (1989). Dental age and severity of malocclusion play an important role in treatment planning (DiBiase, 2002; McIntyre, 2004).

The purpose of this study was to develop cephalometric standards for Slovenians in the early and late mixed dentition periods.

Subjects and methods

Ethical approval for the study was obtained from the Medical Ethics Committee of the Ministry of Health of Slovenia (reference KME SSp/02/01).

Eighty-eight children (46 girls and 42 boys) in the mixed dentition period (mean age 9.31 years, SD = 1.52) were selected from the files of the Department of Orthodontics, University of Ljubljana, Slovenia.

An interview, intraoral examination, panoramic radiograph, study cast and cephalogram were obtained from all the participants.

Dental age was determined according to the erupted permanent teeth in the oral cavity (Proffit and Ackermann, 1993). The sample was then divided into two groups according to dental age: early (dental age 6–10 years) and late (dental age 11–14 years) mixed dentition. The chronological age of the subjects in the first group was between 6.4 and 11.6 years (mean 8.5 years, SD 1.0 years), while in the second group it was between 7.6 and 13.5 years (mean 10.6 years, SD 1.3 years).

The study casts were assessed using a modification of the method of Eismann (1980) for the objective assessment of malocclusion in the mixed dentition (Farčnik *et al.*, 1985). Morphological signs were measured and numerically evaluated. Anterior and posterior crowding, rotations and inclinations of the incisors and canines, anterior open bite, anterior crossbite, overbite, overjet, sagittal and transversal occlusion were assessed. Only those children whose score did not exceed 15 points were included in the study. The other inclusion criteria were the absence of aplasia and supernumerary teeth, no congenital anomalies and no previous orthodontic treatment. One hundred and seventy-two children were originally assessed and 84 excluded.

Cephalograms were taken under standard conditions: the distance from focus to the median plane of the patient's head was 150 cm, and the median plane–film distance was 10 cm. The cephalograms were taken with the subjects standing and the head positioned in the cephalostat and orientated to the Frankfort horizontal plane with the teeth in maximum intercuspation. The magnification of 10 per cent was taken into account in the linear measurements.

The films were traced and subsequently measured twice by hand. The two tracing procedures were carried out by the same orthodontist (MD) who performed all the measurements, in order to avoid calibration problems.

Cephalometric analysis

The landmarks used are shown in Figure 1 (Miyashita, 1996), and the reference lines in Figure 2.

Measurements, which are part of the cephalometric analysis used at the Department of Orthodontics, University of Ljubljana, were carried out (Figures 3, 4 and 5).

Reliability assessment

In general, the measurements were carried out twice by the same orthodontist (MD). For each measurement, six indicators of reliability were calculated:

1. Pearson's correlation coefficient squared;

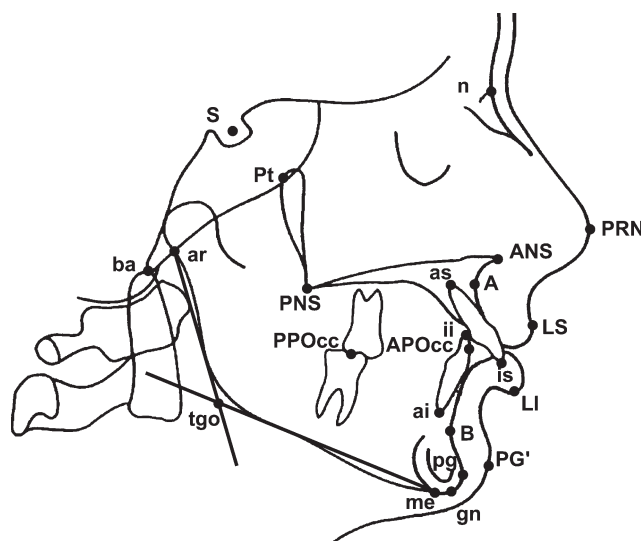


Figure 1 Cephalometric landmarks. *Hard tissue*: nasion (n) – the point where the midsagittal plane intersects the most anterior point of the nasofrontal suture; sella turcica (S) – the centre of sella turcica; basion (ba) – the most inferior posterior point in the sagittal plane on the anterior rim of the foramen magnum; articulare (ar) – the point of intersection of the dorsal contours of processus articularis mandibulae and os temporale; pterygoid point (Pt) – most posterior point on the outline of the pterygopalatine fossa; anterior nasal spine (ANS) – the tip of the anterior nasal spine as seen on the radiograph in norma laterali; posterior nasal spine (PNS) – most posterior point on the contour of the bony palate; point A (A) – the deepest point on the contour of the alveolar projection, between the spinal point and prosthion; point B (B) – the deepest midline point on the mandible between infradentale and pogonion; incision superior (is) – mid-point on the incisal edge of the most prominent upper central incisor; incision inferior (ii) – the incisal point of the most prominent medial mandibular incisor; upper incisor apex (as) – the root apex of the most prominent upper incisor; lower incisor apex (ai) – the root apex of the most prominent lower incisor; anterior occlusal point (APOcc) – the mid-point of the incisor overbite in occlusion; posterior occlusal point (PPOcc) – the most distal point of the contact between the most posterior molar in occlusion; pogonion (pg) – the most anterior point on the symphysis of the mandible; menton (me) – the lowest point of the contour of the mandibular symphysis; gonion (tgo) – intersection between mandibular line (ML) and ramus line; gnathion (gn) – most downward and forward point on the symphysis. *Soft tissue*: pronasale (PRN) – the most prominent or anterior point of the nose tip; labrale superius (LS) – the most prominent point located on the vermillion border of the upper lip in the mid-sagittal plane; labrale inferius (LI) – the most prominent point located on the vermillion border of the lower lip in the mid-sagittal plane; soft tissue pogonion (PG') – the most prominent or anterior point on the soft tissue chin in the mid-sagittal plane.

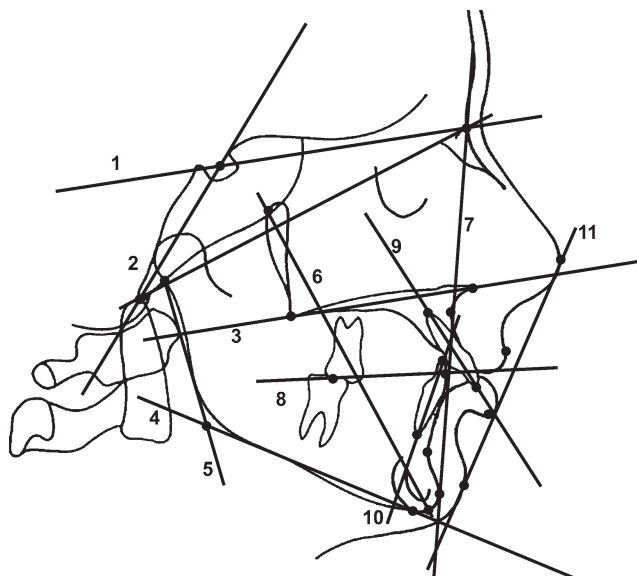


Figure 2 Reference lines: 1, nasion–sella line; 2, sella–basion line; 3, nasal line; 4, mandibular line; 5, tangent of mandibular ramus ascendens; 6, facial axis; 7, nasion–pogonion line; 8, occlusal line; 9, long axis of the upper incisors; 10, long axis of the lower incisors; 11, Ricketts' E line.

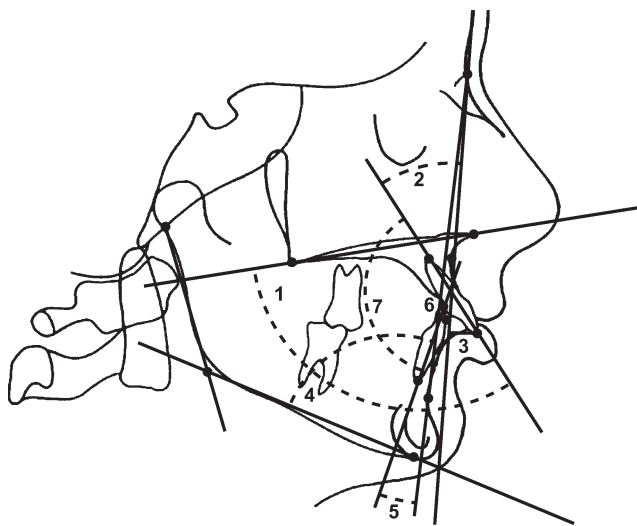


Figure 3 Dental measurements. Inclination of the upper incisors: 1. ILs/NL ($^{\circ}$), 2. ILs/NA ($^{\circ}$); protrusion of the upper incisors: 3. is \perp NA (mm); inclination of the lower incisors: 4. ILi/ML ($^{\circ}$); 5. ILi/NB ($^{\circ}$); protrusion of the lower incisors: 6. ii \perp NB (mm); interincisal angle: 7. ILs/ILi ($^{\circ}$).

2. Slope of the regression line fixed through the origin (second measurement predicted from the first);
3. Mean inter-subject difference between the first and the second measurement;
4. Standard deviation of the difference;
5. Standard error of the difference;
6. Median coefficient of within-subject variation (across subjects).

With coefficients of variation (CV), the median was used instead of the mean because there were only two data points



Figure 4 Skeletal vertical measurements. Inclination of the maxilla: 1. NL/NSL ($^{\circ}$); inclination of the mandible: 2. ML/NSL ($^{\circ}$); interbasal relationship: 3. ML/NL ($^{\circ}$); posterior face height: 4. PFH (mm); anterior face height: 5. AFH (mm); 6. gonial angle ($^{\circ}$); inclination of facial axis: 7. n-ba/facial axis.

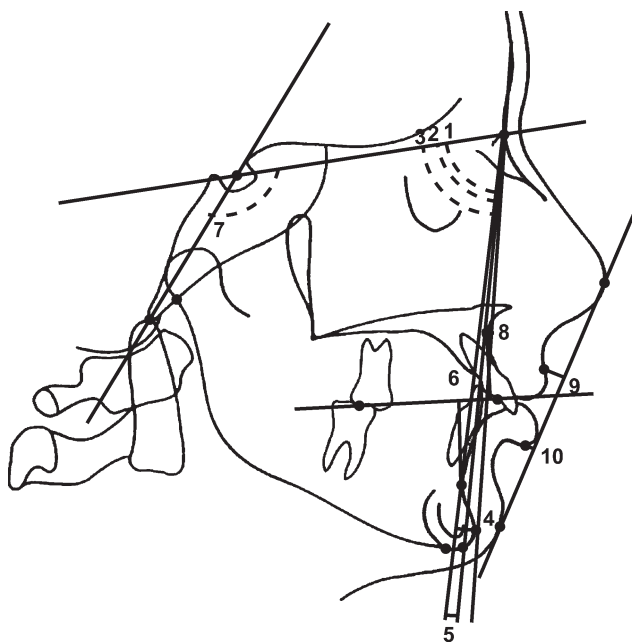


Figure 5 Skeletal sagittal and soft tissue measurements. Maxillary prognathism: 1. SNA ($^{\circ}$); mandibular prognathism: 2. SNB ($^{\circ}$); chin prognathism: 3. SNpg ($^{\circ}$); 4. pg \perp NB (mm); jaw relationship: 5. ANB ($^{\circ}$); 6. Wits appraisal (mm); inclination of cranial base: 7. NSL – ba ($^{\circ}$); facial convexity: 8. A \perp N–pg (mm); 9. LS \perp EL (mm); 10. LI \perp EL (mm).

per subject, which resulted in some extreme values of CV, especially for the measurements with small absolute values.

Gender and dentition differences

After checking that the distribution of the measurements did not depart markedly from normality, gender and dentition differences were tested with two-way analysis of variance

Table 1 Results of reliability assessment.

Parameter	<i>n</i>	<i>r</i> ²	<i>b</i> _{a=0}	<i>M</i> _d	<i>SD</i> _d	<i>SE</i> _d	<i>Me</i> _{CV%}
Dental analysis							
ILs/NL (°)	81	0.912	0.994	0.444	1.835	0.204	0.989
ILs/NA (°)	81	0.926	1.008	-0.160	1.847	0.205	2.571
is ⊥ NA (mm)	81	0.843	0.924	0.123	0.846	0.094	0.000
ILi/NB (°)	81	0.877	0.997	-0.056	2.037	0.226	2.668
ILi/ML (°)	81	0.910	0.998	0.148	1.875	0.208	0.827
ii ⊥ NB (mm)	81	0.916	0.967	0.093	0.531	0.059	0.000
ILs/ILi (°)	81	0.939	0.998	0.130	2.407	0.267	0.597
Vertical skeletal relationships							
ML/NL (°)	81	0.941	0.994	0.136	1.093	0.121	2.245
ML/NSL (°)	81	0.947	0.996	0.086	1.129	0.125	1.886
NL/NSL (°)	81	0.893	0.987	-0.037	1.112	0.124	6.734
PFH/AFH	81	0.927	0.997	0.149	1.177	0.131	0.485
PFH (mm)	81	0.969	0.999	0.037	0.945	0.105	0.924
AFH (mm)	81	0.980	1.003	-0.321	0.960	0.107	0.555
Gonial angle (°)	81	0.946	0.999	0.068	1.478	0.164	0.550
Facial axis (°)	81	0.924	1.000	0.000	0.959	0.107	0.401
Sagittal skeletal relationships							
SNA (°)	81	0.934	1.001	-0.086	0.918	0.102	0.458
SNB (°)	81	0.932	1.001	-0.062	0.889	0.099	0.000
ANB (°)	81	0.858	1.002	-0.030	0.654	0.073	5.238
NS-ba (°)	81	0.942	1.001	-0.204	1.315	0.146	0.522
pg ⊥ NB (mm)	81	0.922	0.975	0.074	0.419	0.047	0.000
SNpg (°)	81	0.933	0.999	0.074	0.905	0.101	0.430
Facial convexity (°)	81	0.847	0.992	-0.043	0.712	0.079	5.238
Wits appraisal (mm)	81	0.904	0.969	-0.056	0.581	0.065	0.000
Soft tissue measurements							
LS ⊥ EL (mm)	55	0.957	1.009	0.055	0.438	0.059	0.000
LI ⊥ EL (mm)	54	0.946	0.978	-0.009	0.587	0.080	0.000

n, number of subjects measured twice; *r*², squared Pearson's correlation coefficient; *b*_{a=0}, slope of regression line fixed through the origin when predicting the second measurement from the first; *M*_d, mean inter-subject difference between the first and the second measurement; *SD*_d, standard deviation of the difference; *SE*_d, standard error of the difference; *Me*_{CV%}, median coefficient of within-subject variation across subjects.

(ANOVA). Both gender and dentition were treated as fixed factors with two levels of variation (girls versus boys; early versus late mixed dentition). To compensate for the problem of multiple tests and the correlation between measurements, the significance level was set at 0.5 per cent.

Results

The results of the reliability assessment are presented in Table 1. The reliability of measurements was satisfactory: squared correlation coefficients were mainly higher than 0.90; all regression line slopes through the origin were very close to 1; the mean within-subject differences were very small compared with the measurements, especially when considering the standard errors of these differences, which implies that confidence intervals for differences included zero in almost all cases; and median CV were zero or less than 10 per cent.

Descriptive statistics for the cephalometric measurements are shown in Table 2, analysed by dentition. Since reliability was found to be satisfactory, the average of the two measurements was used as the datum for the subjects having undergone two measurements.

The results of ANOVA are summarised in Table 3 (only statistical significance is reported).

Discussion

The sample was selected on the basis of the score of the modified Eismann method for the objective assessment of malocclusion in the mixed dentition. The morphological signs of malocclusion were measured and numerically evaluated. Only children whose score did not exceed 15 points were included in the study. This means that the sample consisted of subjects with a mild malocclusion and there was no influence of the skeletal malocclusion in the values of the general population.

Bishara (1981) found larger linear dimensions in boys. In the present investigation, statistically significant differences between boys and girls were observed in anterior (AFH) and posterior (PFH) face heights. For other measurements, there were no statistically significant differences. The observation time interval was between 6 and 13 years of age. Ursi *et al.* (1993) found that linear dimensions were similar in both genders up to 14 years of age and thereafter they remained relatively constant in girls while increasing in boys. The direction of facial growth was similar in both genders. El-Batouti *et al.* (1994) observed the most pronounced differences between genders after 12 years of age, which is in accordance with the present results: in

Table 2 Descriptive statistics for cephalometric measurements in the early and late mixed dentition period.

Parameter	Early mixed dentition				Late mixed dentition				Total			
	M	SD	Min	Max	M	SD	Min	Max	M	SD	Min	Max
Dental analysis												
ILs/NL (°)	111.1	5.8	93.0	127.5	109.3	6.2	97.5	119.5	110.4	6.0	93.0	127.5
ILs/NA (°)	23.5	6.1	7.0	44.0	22.4	6.7	10.3	37.5	23.1	6.4	7.0	44.0
is ⊥ NA (mm)	2.4	1.9	-1.0	7.5	3.0	2.1	-1.5	7.3	2.7	2.0	-1.5	7.5
ILi/NB (°)	26.8	5.9	12.0	40.0	26.6	5.1	17.5	37.0	26.7	5.6	12.0	40.0
ILi/ML (°)	95.4	6.4	82.0	107.0	97.6	5.7	88.5	108.0	96.3	6.2	82.0	108.0
Ii ⊥ NB (mm)	3.7	1.7	0.0	8.0	3.9	1.9	-1.3	9.0	3.8	1.8	-1.3	9.0
ILs/ILi (°)	126.6	8.8	107.0	144.5	127.5	9.8	109.0	145.0	127.0	9.2	107.0	145.0
Vertical skeletal relationships												
ML/NL (°)	27.5	4.7	17.5	38.5	25.3	3.6	16.5	32.3	26.6	4.4	16.5	38.5
ML/NSL (°)	34.2	5.1	22.3	45.5	32.5	4.5	24.0	42.5	33.5	4.9	22.3	45.5
NL/NSL (°)	6.5	3.0	0.5	14.0	7.2	3.7	1.5	17.0	6.8	3.3	0.5	17.0
PFH/AFH	63.7	4.3	54.0	72.8	64.1	4.3	55.4	72.4	63.8	4.3	54.0	72.8
PFH (mm)*	69.6	5.2	60.5	86.0	72.0	6.0	61.0	84.5	70.6	5.6	60.5	86.0
AFH (mm)*	109.2	6.1	94.5	119.5	112.4	7.8	97.0	129.0	110.5	7.0	94.5	129.0
Gonial angle (°)	127.6	6.8	109.0	140.0	124.9	5.0	116.0	135.5	126.6	6.3	109.0	140.0
Facial axis (°)	91.4	3.6	83.5	99.0	91.7	3.2	86.0	97.0	91.5	3.4	83.5	99.0
Sagittal skeletal relationships												
SNA (°)	80.0	3.5	71.0	87.0	80.5	3.4	69.8	87.0	80.7	3.5	69.8	87.0
SNB (°)	77.1	3.3	69.0	83.0	76.9	3.5	65.8	84.0	77.1	3.4	65.8	84.0
ANB (°)	3.7	1.8	-1.0	8.0	3.6	1.3	1.0	6.5	3.7	1.6	-1.0	8.0
NSL-ba (°)	130.0	5.3	117.5	141.5	129.7	5.3	116.0	146.5	129.8	5.3	116.0	146.5
pg ⊥ NB (mm)	1.2	1.4	-2.5	5.0	2.0	1.3	0.0	6.0	1.6	1.4	-2.3	6.0
SNpg (°)	77.9	3.4	70.0	84.5	78.0	3.6	66.8	85.0	78.0	3.4	66.8	85.0
Facial convexity (°)	3.1	1.7	-1.5	6.8	2.6	1.6	-3.0	6.0	2.9	1.7	-3.0	6.8
Wits appraisal (mm)	-0.6	1.7	-4.5	3.3	-0.2	2.1	-4.5	3.8	-0.5	1.9	-4.5	3.8
Soft tissue measurements												
LS ⊥ EL (mm)	-1.7	1.6	-4.5	1.0	-3.0	2.4	-8.0	1.0	-2.3	2.0	-8.0	1.0
LI ⊥ EL (mm)	-0.1	2.1	-5.0	3.5	-1.6	2.6	-7.5	3.0	-0.7	2.4	-7.5	3.5

M, arithmetic mean; SD, standard deviation; min, minimum observed value; max, maximum observed value.

*The values of PFH and AFH differ significantly between genders ($P = 0.001$). The means for PFH and AFH for the early mixed dentition period were 72.3 mm and 112.0 mm for boys, and 66.9 mm and 106.3 mm for girls, respectively. For the late mixed dentition period, the means were 74.1 mm and 115.7 mm for boys, and 70.4 mm and 110.0 mm for girls, respectively.

younger children there were no significant gender differences. Yeong and Huggare (2004) reported statistically significant differences between Singaporean boys and girls in maxillary and mandibular prognathism, linear dimensions of anterior and posterior cranial base, face height measurements, upper and lower incisor inclination and lip prominence. Children participating in their investigation were older than those in the present study (mean age for girls 12.5 ± 0.7 years, mean age for boys 12.7 ± 0.7 years).

The cephalometric parameter values changed with development, but no significant differences between subjects in the early and late mixed dentition were found. Some changes in vertical relationships were observed: a decrease in mandibular inclination (ML/NSL), interbasal angle (NL/ML) and gonial angle, and an increase in AFH and PFH. These observations confirm the findings of Björk (1963), Bishara (1981); Bishara *et al.* (1984) and El-Batouti *et al.* (1994).

El-Batouti *et al.* (1994) found the most pronounced changes in prognathism of the maxilla and mandible (SNA and SNB angles) from 6 to 18 years of age. In the present investigation, the sagittal skeletal relationships remained

constant from the early to the late mixed dentition. The studied age period was too limited to observe significant differences. The most pronounced change was an increase in NB ⊥ pg distance and a decrease in facial convexity.

There were no significant changes in the position of the upper and lower central incisors from the early to the late mixed dentition period. All parameters remained constant in the observation time interval. The marked age-related changes in the position of the central incisors in the Norwegian population were found from 6 to 9 years of age; afterwards the position of the incisors remain unchanged (El-Batouti *et al.*, 1994). The values for the inclination of the upper and lower incisors in Droschl's (1984) study did not change in the period between 8 and 11 years of age, which is in accordance with the present findings.

Changes in soft tissue cephalometric measurements were also found. The distance from Ricketts' E line to the upper and lower lip increased with age. This supports the findings of Ricketts *et al.* (1972).

The majority of researchers have developed cephalometric standard values according to chronological age. A comparison

Table 3 Summary of analysis of variance.

Parameter	<i>P</i> (Dental age)	<i>P</i> (Gender)	<i>P</i> (Interaction)
Dental analysis			
ILs/NL (°)	0.1378	0.1300	0.9171
ILs/NA (°)	0.4115	0.9152	0.8790
is ⊥ NA (mm)	0.1426	0.3832	0.3863
ILi/NB (°)	0.8062	0.0570	0.2029
ILi/ML (°)	0.1277	0.0367	0.7451
Ii ⊥ NB (mm)	0.6068	0.6740	0.7526
ILs/ILi (°)	0.6040	0.1880	0.6900
Vertical skeletal relationships			
ML/NL (°)	0.0317	0.1602	0.6980
ML/NSL (°)	0.1208	0.6978	0.2243
NL/NSL (°)	0.3717	0.0101	0.2003
PFH/AFH	0.6849	0.3211	0.5393
PFH (mm)	0.0174	0.0001*	0.4518
AFH (mm)	0.0080	0.0001*	0.9964
Gonial angle (°)	0.0572	0.4037	0.8893
Facial axis (°)	0.6018	0.9226	0.3627
Sagittal skeletal relationships			
SNA (°)	0.6787	0.3780	0.2844
SNB (°)	0.7658	0.2606	0.2018
ANB (°)	0.9091	0.7984	0.6228
NSL-ba (°)	0.7191	0.0246	0.1523
pg ⊥ NB (mm)	0.0105	0.3759	0.4458
SNpg (°)	0.8781	0.2468	0.2071
Facial convexity (°)	0.2195	0.5633	0.8331
Wits appraisal (mm)	0.2493	0.9585	0.5296
Soft tissue measurements			
LS ⊥ EL (mm)	0.0507	0.0400	0.1713
LI ⊥ EL (mm)	0.0426	0.3038	0.1490

**P* < 0.05.

between the present findings and their results is not exactly appropriate, since the inclusion criteria for determining the developmental stage in this study were dental instead of chronological. The mean age of the present sample was 9.31 ± 1.52 years. An approximate comparison between selected samples could be performed. The results of this study and the values of Austrian (aged from 9 years to 9 years and 11 months), American (aged 10 years) and Norwegian (aged 9 years) children are shown in Table 4 (Bishara *et al.*, 1984; Droschl, 1984; El-Batouti *et al.*, 1994). The parameters that were measured in at least two studies are presented.

The geographically closest sample to the Slovenian population is the Austrian sample (Droschl, 1984). There are differences in SNB and ANB values between Slovenian, Austrian and Norwegian girls. The mandible of Austrian and Norwegian girls is more protrusive which results in smaller ANB values. The largest difference in vertical skeletal relationships between Slovenian and Austrian children is in the values for gonial angle, with Austrian children showing larger angles. The Slovenian and Austrian samples have larger anterior face heights compared with Americans. Slovenian girls also have more proclination of the lower incisors than the Austrian and Norwegian populations studied.

The most pronounced changes between the present and the subjects in the study of Droschl (1984) were observed in the values of soft tissue measurements. The upper and lower lip were behind the E line in the present study, but in the Austrian sample only girls had the lower lip behind the E line. The position of the lower lip in boys and the upper lip in both genders was in front of Ricketts' E line.

Table 4 Values of cephalometric parameters of Slovenian, Austrian, Norwegian and American subjects.

Parameter	Present study		Droschl, 1984*		El-Batouti <i>et al.</i> , 1994**		Bishara <i>et al.</i> , 1984***	
	Boys	Girls	Boys	Girls	Boys	Girls	Boys	Girls
	M	M	M	M	M	M	M	M
SNA (°)	81.1	80.3	80.7	80.9	82.3	80.8	80.6	80.0
SNB(°)	77.6	76.6	77.2	78.1	78.9	78.0	77.0	76.1
ANB (°)	3.6	3.7	3.5	2.7	3.4	2.8	3.6	3.9
SNpg (°)	78.8	77.5	77.9	78.8			77.2	75.9
NSL-ba (°)	128.4	131.2			129.8	130.7		
ML/NSL (°)	33.2	33.8	34.7	33.5	33.4	35.0	33.1	35.1
NL/NSL (°)	5.7	7.7	6.8	7.2	6.1	7.7		
NL/ML (°)	27.4	26.0	27.9	26.2				
Gonial angle (°)	127.3	125.9	131.2	129.8				
PFH (mm)	72.9	68.4	68.9	68.3				
AFH (mm)	113.0	107.9	109.1	106.6			104.6	100.2
PFH/AFH (%)	64.4	63.4	63.2	64.1				
ILs/ILi (°)	128.4	125.7	129.9	131.6	125.8	129.3		
ILi/ML (°)	94.7	97.8	92.1	92.4	94.6	92.7		
ILs/NL (°)	109.4	111.2	109.9	109.9				

M, arithmetic mean.

*The sample consisted of children aged from 9 years to 9 years and 11 months (Droschl, 1984); **cephalometric standards for boys and girls at 9 years of age (El-Batouti *et al.*, 1994); ***values of cephalometric parameters of children aged 10 years (Bishara *et al.*, 1984).

Conclusion

The obtained data can be used as the cephalometric standards for Slovenians in the period of the mixed dentition. There are no significant differences between the early and mixed dentition. In this period of development, there are also very small gender differences. The measurement mean values for the total sample can be used as cephalometric standards.

Address for correspondence

Martina Drevenšek
Department of Orthodontics
University of Ljubljana
Zaloška 2
1000 Ljubljana
Slovenia
E-mail: martina.drevensek@mf.uni-lj.si

References

- Argyropoulos E, Sassouni V 1989 Comparison of the dentofacial pattern for native Greek and American-Caucasian adolescents. *American Journal of Orthodontics and Dentofacial Orthopedics* 95: 238–249
- Ben-Bassat Y, Dinte A, Brin I, Koyoundjisky-Kaye E 1992 Cephalometric pattern of Jewish East European adolescents with clinically acceptable occlusion. *American Journal of Orthodontics and Dentofacial Orthopedics* 102: 443–448
- Bishara S E 1981 Longitudinal cephalometric standards from 5 years of age to adulthood. *American Journal of Orthodontics* 79: 35–44
- Bishara S E, Fernandez A G 1985 Cephalometric comparison of the dentofacial relationships of two adolescent populations from Iowa and Northern Mexico. *American Journal of Orthodontics* 88: 314–322
- Bishara S E, Abdalla E M, Hoppens B J 1990 Cephalometric comparison of dentofacial parameters between Egyptian and North American adolescents. *American Journal of Orthodontics and Dentofacial Orthopedics* 97: 413–422
- Bishara S E, Peterson L C, Bishara E C 1984 Changes in facial dimensions and relationships between the ages of 5 and 25 years. *American Journal of Orthodontics* 85: 238–252
- Björk A 1963 Variations in the growth pattern of the human mandible: longitudinal radiographic study by implant method. *Journal of Dental Research* 42 (Suppl. 1): 400–411
- Broadbent Sr B H, Broadbent Jr B H, Golden W Y 1975 Bolton standards of dentofacial developmental growth. C. V. Mosby Co., St. Louis
- Burstone C J, James R B, Hilgers J J, Schulhof R 1979 Cephalometrics for orthognathic surgery. *Journal of Oral Surgery* 36: 269–277
- Coben S E 1955 The integration of facial skeletal variants. *American Journal of Orthodontics* 41: 407–434
- Cooke M S, Wei S H 1989 A comparative study of southern Chinese and British Caucasian cephalometric standards. *Angle Orthodontist* 59: 131–138
- DiBiase A 2002 The timing of orthodontic treatment. *Dental Update* 29: 434–441
- Downs W B 1952 The role of cephalometrics in orthodontic case analysis and diagnosis. *American Journal of Orthodontics* 38: 162–182
- Droschl H 1984 Fernroentgenwerte unbehadelter Kinder zwischen dem 6. und 15. Lebensjahr. *Quintessenz*, Berlin, pp. 65–76
- Eismann D 1980 Reliable assessment of morphological changes resulting from orthodontic treatment. *European Journal of Orthodontics* 2: 19–25
- El-Batouti A, Ögaard B, Bishara S E 1994 Longitudinal cephalometric standards for Norwegians between the ages 6 and 18 years. *European Journal of Orthodontics* 16: 501–509
- Farčnik F, Korpar M, Premik M, Zorec R 1985 Numerical evaluation of malocclusion in study models of the mixed dentition. *Zobozdravstveni Vestnik* 40: 169–179
- Franchi L, Baccetti T, McNamara Jr J A 1998 Cephalometric floating norms for North American adults. *Angle Orthodontist* 68: 497–502
- Haavikko K, Rakhamo A 1989 Age and skeletal type-related changes of some cephalometric parameters in Finnish girls. *European Journal of Orthodontics* 11: 283–289
- Hamdan A M, Rock W P 2001 Cephalometric norms in an Arabic population. *Journal of Orthodontics* 28: 297–300
- Hasund A 1977 Clinical cephalometry for the Bergen technique. University of Bergen, Norway
- Holdaway R A 1984 A soft tissue cephalometric analysis and its use in orthodontic treatment planning. *American Journal of Orthodontics* 85: 279–293
- Huang W J, Taylor R W, Dasanayake A P 1998 Determining cephalometric norms for Caucasians and African Americans in Birmingham. *Angle Orthodontist* 68: 503–512
- McIntyre G T 2004 Treatment planning in Class III malocclusion. *Dental Update* 31: 13–20
- McNamara Jr J A 1984 A method of cephalometric evaluation. *American Journal of Orthodontics* 86: 449–469
- Miyashita K 1996 Glossary of cephalometric terms and definitions. In: Miyashita K, Dixon A D (eds.) *Contemporary cephalometric radiography*. Quintessence Publishing, Tokyo, pp. 245–259
- Muretic Z 1982 Standardizacija uzorka profila glave u ispitanika definirane populacije uz vlastiti prilog rentgenokefalometrijskoj analizi. Thesis. University of Zagreb, Croatia
- Proffit W R, Ackermann J L 1993 Orthodontic diagnosis: the development of orthodontic problems. In: Proffit W R, Fields H W (eds.) *Contemporary orthodontics*. 2nd edn. Mosby Year Book, St Louis, pp. 56–86
- Ricketts R M 1957 Planning treatment on the basis of the facial pattern and an estimate of its growth. *American Journal of Orthodontics* 27: 14–37
- Ricketts R M, Bench R W, Hilgers J J, Schulhof R 1972 An overview of computerized cephalometrics. *American Journal of Orthodontics* 61: 1–28
- Riolo M L, Moyers R E, McNamara J A, Hunter W S 1974 An atlas of craniofacial growth: cephalometric standards from the University School growth study. Monograph No. 2, Craniofacial Growth Series, Center for Human Growth and Development, University of Michigan, Ann Arbor
- Segner D 1989 Floating norms as a means to describe individual skeletal pattern. *European Journal of Orthodontics* 11: 214–220
- Steiner C C 1959 Cephalometrics in clinical practice. *Angle Orthodontist* 29: 8–29
- Taylor W H, Hitchcock H P 1966 Orthodontic influence upon anterior face height. *Angle Orthodontist* 36: 80–88
- Tollaro I, Baccetti T, Franchi L 1996 Floating norms for the assessment of craniofacial pattern in the deciduous dentition. *European Journal of Orthodontics* 18: 359–365
- Trenouth M J, Davies P H J, Johnson J S 1985 A statistical comparison of three sets of normative data from which to derive standards for craniofacial measurements. *European Journal of Orthodontics* 7: 193–200
- Trenouth M J, Laitung G, Nafel A J 1999 Differences in cephalometric reference values between five centres: relevance to the Euro-Cleft study. *British Journal of Oral and Maxillofacial Surgery* 37: 19–24
- Ursi W J, Trotman C A, McNamara Jr J A, Behrens R G 1993 Sexual dimorphism in normal craniofacial growth. *Angle Orthodontist* 63: 47–56
- Yeong P, Huggare J 2004 Morphology of Singapore Chinese. *European Journal of Orthodontics* 26: 605–612

Copyright of European Journal of Orthodontics is the property of Oxford University Press / UK and its content may not be copied or emailed to multiple sites or posted to a listserv without the copyright holder's express written permission. However, users may print, download, or email articles for individual use.