

# Ethnic differences in the soft tissue profiles of Turkish and European–American young adults with normal occlusions and well-balanced faces

Tancan Uysal<sup>\*,\*\*</sup>, Asli Baysal<sup>\*</sup>, Ahmet Yagci<sup>\*</sup>, Lauren M. Sigler<sup>\*\*\*</sup> and James A. McNamara Jr.<sup>\*\*\*\*</sup>

<sup>\*</sup>Department of Orthodontics, Faculty of Dentistry, Erciyes University, Kayseri, Turkey, <sup>\*\*</sup>Department of Orthodontics, School of Dentistry, King Saud University, Riyadh, Saudi Arabia, <sup>\*\*\*</sup>Department of Orthodontics and Pediatric Dentistry, School of Dentistry, The University of Michigan, Ann Arbor, MI, USA, <sup>\*\*\*\*</sup>Graber Endowed Professor, Department of Orthodontics and Pediatric Dentistry, The University of Michigan, Ann Arbor, MI, USA

Correspondence to: Dr Tancan Uysal, Erciyes Üniversitesi, Dişhekimliği Fakültesi, Ortodonti A.D. Melikgazi, Kampüs Kayseri, 38039 Turkey. E-mail: tancanuysal@yahoo.com

**SUMMARY** The aim of this study was to evaluate soft tissue differences between Turkish and North American adults by comparing two sample populations with ideal occlusion and well-balanced faces. Lateral cephalometric radiographs of 117 Anatolian Turkish adults (65 female and 52 male, mean age:  $23.9 \pm 2.8$  years) were compared with a sample of 116 adults of European–American ancestry (64 female and 52 male, mean age:  $25.0 \pm 6.8$  years). The cephalometric analyses of Holdaway, Epker, and Legan and Burstone were performed using Dolphin Image Software 9.0. Thirty-two measurements (27 linear and 5 angular) were analysed. For statistical evaluation, independent samples *t*-tests were performed.

Distinct differences were found between the two samples in facial convexity, upper lip position and length, lower lip position, chin prominence, and chin thickness. Vertical proportional findings were similar between groups. Ethnic differences were found between Turkish and North American adults in the soft tissue profile. It is appropriate to consider these differences during routine diagnosis and treatment planning of a Turkish patient or an American patient of European ancestry.

## Introduction

The evaluation of the soft tissues in patients undergoing orthodontics or corrective jaw surgery plays a crucial role in both diagnosis and treatment planning. Both hard and soft tissue norms must be considered in establishing harmonious facial aesthetics and an optimal functional occlusion (Bishara and Fernandez, 1985; Bishara *et al.*, 1998). Most widely accepted normative values, however, are based on longitudinal growth studies of untreated subjects of European (Wylie, 1947; Downs, 1948; Steiner, 1953; Tweed, 1953, 1954; Ricketts, 1960) or North American (Riolo *et al.*, 1974; Broadbent *et al.*, 1975; Pahl-Anderson *et al.*, 1979; Behrents, 1985; Bishara and Jakobsen, 1985; Buschang *et al.*, 1986) ancestry.

Legan and Burstone (1980), Holdaway (1983), and Epker *et al.* (1998) have developed a detailed soft tissue analyses that have gained wide acceptance in clinical orthodontic evaluation and orthognathic surgery planning. In that, these analyses once again were based on data derived from Caucasian samples, it has been difficult to apply the norms proposed in these analyses to other racial and ethnic groups. Thus, additional clinical studies have been conducted to evaluate possible ethnic/racial differences or determine

normative values for different racial and ethnic populations (Craven, 1958; Nanda and Nanda, 1969; Humerfelt, 1970; Jacobson, 1978; Uesato *et al.*, 1978; Bacon and Mathis, 1983; Bacon *et al.*, 1983; Shalhoub *et al.*, 1987; Cooke and Wei, 1988; Flynn *et al.*, 1989; Kapila, 1989; Park *et al.*, 1989; Lew *et al.*, 1992; Cerci *et al.*, 1993; Swlerenga *et al.*, 1994; Miyajima *et al.*, 1996; Evanko *et al.*, 1997; Hamdan and Rock, 2001; Hwang *et al.*, 2002; Scavone *et al.*, 2006).

The focus of the current study is the soft tissue profiles of Anatolian Turkish adults. Anatolia is a geographic and historical term denoting the westernmost protrusion of Asia, comprising the majority of the Republic of Turkey. Several attempts have been made to evaluate the soft tissues of the Turkish population (Göyenc *et al.*, 1992; Erbay and Caniklioglu, 2002; Erbay *et al.*, 2002; Basciftci *et al.*, 2003). For example, Erbay *et al.* (2002) investigated horizontal lip positions of Anatolian Turkish adults using several soft tissue analyses. Erbay and Caniklioglu (2002) used soft tissue analysis to evaluate the perceptions of beauty among Anatolian Turkish adults. Göyenc *et al.* (1992) examined soft tissue changes in Class I, Class II, and Class III patients with skeletal malocclusions. Basciftci *et al.* (2003) conducted a study to determine Holdaway soft tissue norms in Anatolian Turkish

adults and found insignificant differences between Turkish and Holdaway norms except for soft tissue chin thickness and basic upper lip thickness.

To our knowledge, there is no study in the literature comparing the soft tissues of Turkish and North American adults directly. Therefore, the aim of this study was to evaluate soft tissue differences between Turkish and North American populations in a sample of subjects with ideal occlusions and well-balanced faces.

### Subjects and methods

In this study, a total of 233 cephalometric radiographs were traced and evaluated to compare Turkish and European-American originated untreated adults.

#### *Turkish sample*

The Turkish sample consisted of 117 subjects with ideal occlusions and well-balanced faces: 65 females with a mean age of  $23.3 \pm 2.5$  years and 52 males with a mean age of  $25.1 \pm 2.6$  years. Subjects were selected according to the following criteria: Turkish with Turkish grandparents, no previous orthodontic or prosthodontic treatment, well-balanced profile, Class I occlusions, and no or minimal incisor irregularity. To ensure these, inclusion criteria were followed, after a clinical examination; cephalometric radiographs were re-evaluated by two experienced investigators of Anatolian Turkish ancestry.

#### *North American sample*

Lateral cephalometric radiographs of 64 females (mean age:  $21.9 \pm 4.0$  years) and 52 males (mean age:  $28.8 \pm 7.6$ ) were used. Inclusion criteria were Caucasian, no previous orthodontic treatment, well-balanced profile, Class I ideal or near-ideal occlusion, and no or minimal incisor irregularity. The samples were selected by two investigators of European-American ancestry.

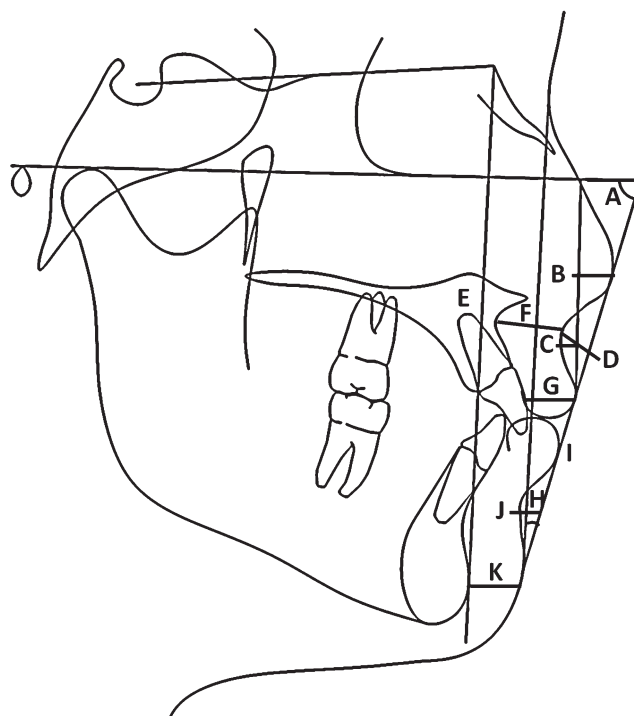
During the formation of the groups, American orthodontists selected North American white subjects with well-balanced faces. Turkish subjects were selected by Turkish orthodontists according to their perception of aesthetics. The method of subject selection created two groups that were each aesthetically pleasing according to each culture's standpoint.

#### *Cephalometric analysis*

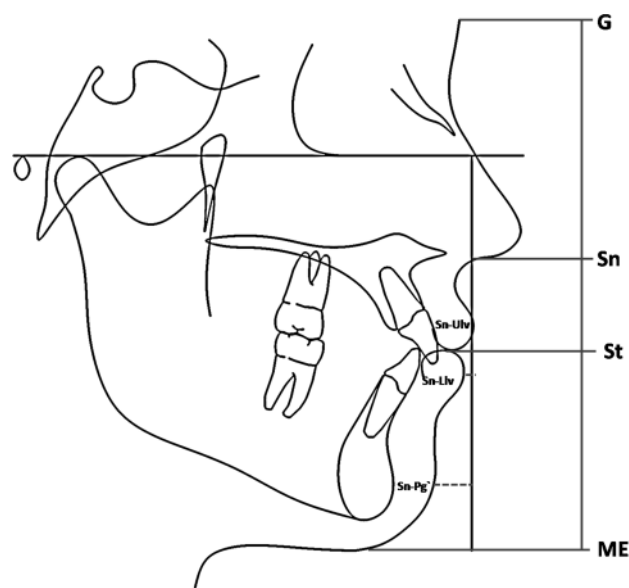
Radiographs were traced by same operator using Dolphin Image Software 9.0 (Dolphin Imaging and Management Solutions, Chatsworth, California, USA). The accuracy of landmark placement was verified by a second investigator, and any differences were resolved by mutual agreement between the two researchers.

Landmark identification was carried out manually on digital images using a mouse-driven cursor. A total of 33

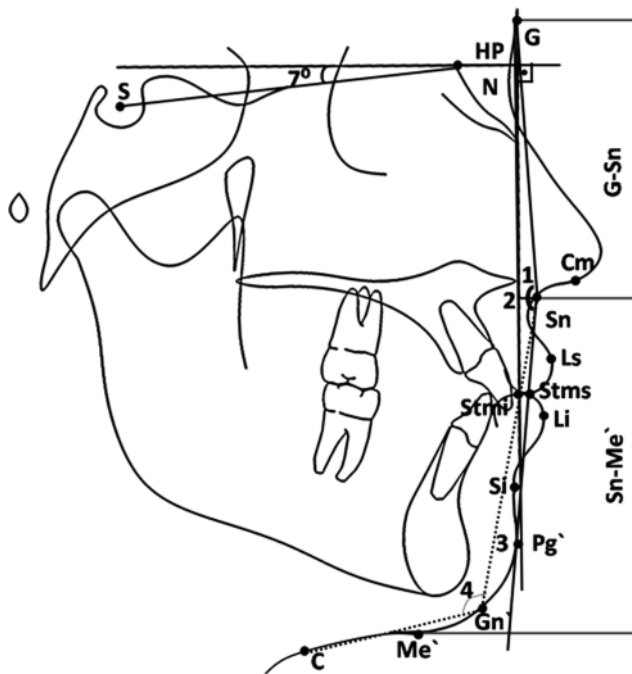
measurements (28 linear and 5 angular) were traced according to the Holdaway, Legan, and Burstone and Epker analysis. Detailed descriptions of the measurements are provided in Figures 1–3.



**Figure 1** Holdaway soft tissue analysis measurements. A, soft tissue facial angle; B, nose prominence; C, superior sulcus depth; D, soft tissue subnasale to H line; E, skeletal profile convexity; F, upper lip thickness; G, upper lip strain; H, H angle; I, lower lip to H line; J, inferior sulcus to H; K, soft tissue chin thickness.



**Figure 2** Epker's soft tissue relations. G, glabella; Sn, subnasale; St, stomion; ME', menton.



**Figure 3** Legan–Burstone soft tissue analysis. Horizontal reference plane (HP), constructed by drawing a line through nasion (N) 7 degrees up from the sella–nasion line. 1, facial convexity angle (G–Sn–Pg'); 2, maxillary prognathism (G vertical–Sn); 3, mandibular prognathism (G vertical–Pg'); 4, lower face–throat angle (Sn–Gn'–C); vertical height ratio (G–Sn/Sn–Me'), lower vertical height–depth ratio (Sn–Gn'/C–Gn'), nasolabial angle (Cm–Sn–Ls), upper lip protrusion (Ls to Sn–Pg'), lower lip protrusion (Li to Sn–Pg'), mentolabial sulcus (Si to Li–Pg'), vertical lip–chin ratio (Sn–Stms/Stmi–Me'), maxillary incisor exposure (Stms–UI), interlabial gap (Stms–Stmi).

### Statistical analysis

All statistical analyses were performed using the Statistical Package for Social Sciences (Windows, version 13.0; SPSS Inc., Chicago, Illinois, USA). The normality test of Shapiro–Wilks and Levene's variance homogeneity test were applied to the data. The data were found normally distributed and there was homogeneity of variance among the groups. Thus, the statistical evaluation was performed using parametric tests. Means and standard deviations were calculated for each measurement.

To determine the errors associated with radiographic measurements, 25 radiographs were retraced 3 weeks after the first measurement and all measurements were repeated. Paired sample *t*-tests were applied to the first and second data sets; differences between the first and second measurements of the 25 radiographs were insignificant. To compare Turkish and North American samples and to determine gender differences, independent samples *t*-tests were performed.

## Results

### Female differences

The comparison between Turkish and North American women is provided in Table 1. The mandible, lower lip, and

soft tissue chin were positioned more posteriorly in Turkish women compared to North American women. Measurements regarding soft tissue convexity showed greater convexity for Turkish women. Similarly, the H angle was found to be approximately 2 degrees greater in Turkish women. Statistically significant differences between two groups were recorded for basic upper lip thickness ( $P = 0.008$ ), soft tissue chin thickness ( $P = 0.008$ ), nasolabial angle ( $P = 0.039$ ), mentolabial sulcus depth ( $P = 0.018$ ), and subnasale–lower lip to lower lip–menton ratio ( $P = 0.001$ ) measurements.

### Male differences

The comparison between Turkish and North American men is provided in Table 2. Both the maxilla and the mandible were found to be retrognathic in the Turkish sample. Soft tissue subnasale and lower lip were positioned more anteriorly relative to the H line in the Turkish sample compared to the North American sample. Similarly, the upper and lower lips were found to be more protrusive in Turkish males. The soft tissue facial angle and the H angle were larger in the Turkish sample. Upper lip length and Subnasale–stomion superioris to stomion inferioris–menton ratio were greater for American sample. Statistically significant differences between two groups were recorded for soft tissue chin thickness ( $P = 0.021$ ), nasolabial angle ( $P < 0.001$ ), mentolabial sulcus depth ( $P = 0.004$ ), and subnasale–lower lip to lower lip–menton ratio ( $P < 0.001$ ) measurements.

## Discussion

This study compared the soft tissue norms of Turkish and North American adults. All study subjects had balanced facial aesthetics and ideal or near-ideal occlusions. Orthodontically treated individuals were excluded because orthodontic treatment may produce changes in the soft tissue profile.

### Chin prominence and thickness

Chin prominence and soft tissue chin thickness were reduced in the Turkish sample for female and male comparisons. Basciftci *et al.* (2003) previously reported increased soft tissue chin thickness in Turkish subjects relative to Holdaway norms.

### Facial convexity and jaw position

The soft tissue facial angle indicates the prominence of the lower face or the chin area (Holdaway, 1983). This measurement was approximately 2 degrees less in the Turkish sample for both genders. For Turkish women, G–Pg' and subnasale perpendicular to chin measurements showed the retrusion of the lower face. Similarly,

**Table 1** Comparison between Turkish and North American females.

| Analysis  | Turkish females (n = 65) |      | North American females (n = 64) |      | P      |
|---|--------------------------|------|---------------------------------|------|--------|
|   | Mean                     | SD   | Mean                            | SD   |        |
| Holdaway analysis                               |                          |      |                                 |      |        |
| Soft tissue facial angle                        | 92.2                     | 3.1  | 94.2                            | 3.4  | <0.001 |
| Nose prominence                                 | 15.3                     | 2.8  | 14.9                            | 3.5  | 0.483  |
| Superior sulcus depth                           | 3.1                      | 1.0  | 3.3                             | 1.6  | 0.289  |
| Soft tissue subnasale to H line                 | 4.1                      | 2.4  | 3.7                             | 2.7  | 0.433  |
| Skeletal profile convexity                      | 1.4                      | 2.2  | 1.8                             | 2.4  | 0.312  |
| Basic upper lip thickness                       | 16.4                     | 2.6  | 15.1                            | 3.0  | 0.008  |
| Upper lip thickness                             | 12.8                     | 1.7  | 12.3                            | 3.1  | 0.265  |
| Upper lip strain                                |                          |      |                                 |      |        |
| H angle   | 13.6                     | 3.8  | 11.7                            | 4.4  | 0.009  |
| Lower lip to H line                             | 0.7                      | 1.4  | 0.3                             | 1.2  | 0.070  |
| Inferior sulcus to H line                       | 5.3                      | 1.4  | 5.0                             | 1.4  | 0.262  |
| Soft tissue chin thickness                      | 12.1                     | 2.0  | 13.5                            | 3.5  | 0.008  |
| Epker soft tissue                               |                          |      |                                 |      |        |
| Middle third height:lower third height          | 101.9                    | 10.3 | 105.0                           | 9.6  | 0.078  |
| Upper lip length                                | 22.3                     | 2.7  | 23.5                            | 4.4  | 0.070  |
| Subnasale-stomion:stomion-menton                | 45.0                     | 5.5  | 45.5                            | 5.9  | 0.643  |
| Subnasale-lower lip:lower lip-menton            | 79.7                     | 13.1 | 72.5                            | 11.0 | 0.001  |
| Interlabial distance                            | 1.2                      | 1.1  | 1.1                             | 1.1  | 0.647  |
| Subnasale perpendicular to Up                   | 1.0                      | 1.7  | 1.6                             | 2.0  | 0.070  |
| Subnasale perpendicular to Lo                   | -1.6                     | 2.5  | 0.0                             | 2.3  | 0.001  |
| Subnasale perpendicular to chin                 | 7.42                     | 5.07 | 4.1                             | 5.59 | 0.001  |
| Legan-Burstone analysis                         |                          |      |                                 |      |        |
| Facial form                                     |                          |      |                                 |      |        |
| Facial convexity angle G-Sn-Pg' angle           | 14.2                     | 4.9  | 10.6                            | 5.2  | <0.001 |
| Maxillary prognathism G-Sn (HP), mm             | 5.1                      | 3.8  | 5.2                             | 5.3  | 0.873  |
| Mandibular prognathism G-Pg' (HP), mm           | -4.7                     | 7.3  | -1.1                            | 7.9  | 0.008  |
| Vertical height ratio G-Sn/Sn-Me' (HP)          | 1.0                      | 0.1  | 1.1                             | 0.1  | 0.179  |
| Lower face-throat angle Sn-Gn'-C dg             | 105.7                    | 7.2  | 106.3                           | 7.2  | 0.659  |
| Lower vertical height- Sn-Gn'/C-Gn' depth ratio | 1.3                      | 0.2  | 1.3                             | 0.2  | 0.659  |
| Lip position                                    |                          |      |                                 |      |        |
| Nasolabial angle Cm-Sn-Ls dg                    | 107.7                    | 8.6  | 111.1                           | 9.7  | 0.039  |
| Upper lip protrusion Ls to Sn-Pg', mm           | 3.0                      | 1.8  | 2.7                             | 1.9  | 0.309  |
| Lower lip protrusion Li to Sn-Pg', mm           | 2.5                      | 2.0  | 1.9                             | 1.6  | 0.090  |
| Mentolabial sulcus Si to Li-Pg', mm             | -5.7                     | 1.1  | -5.2                            | 1.2  | 0.018  |
| Vertical lip-chin ratio Sn-Stms/Stmi-Me'        | 50.3                     | 4.9  | 51.6                            | 6.3  | 0.168  |
| Maxillary incisor exposure Stms-UI, mm          | 3.5                      | 1.7  | 3.3                             | 2.0  | 0.717  |
| Interlabial gap Stms-Stmi HP, mm                | 1.2                      | 1.1  | 1.1                             | 1.1  | 0.647  |

mandibular retrusion maybe the reason for increased soft tissue convexity for Turkish males. Another explanation for increased soft tissue convexity may be the posterior position of soft tissue nasion or glabella points or the thinner soft tissue chin. It should be noted that no measurement was performed to evaluate the position of the forehead in the present study. Compared to the findings of Basciftci *et al.* (2003), soft tissue facial angle measurements were higher in the Turkish sample examined in the current research.

#### *Upper lip position, contour, and length*

Greater values were recorded for the H angle measurement in Turkish subjects compared to the North American sample (approximately 2 degrees for females and 3 degrees for males). This measurement shows the prominence of the upper lip in relation to the overall soft tissue profile (Holdaway, 1983). Increased thickness and protrusion of upper lip in the Turkish sample may explain this finding.

According to Holdaway (1983), the ideal range for the H angle is 7–14 degrees. In the present study, the mean H angle values were within this range. Similar results were reported by Erbay *et al.* (2002) and Basciftci *et al.* (2003).

Superior sulcus depth measurement quantifies the curl or form of the upper lip (Holdaway, 1983); this measurement was not statistically significant between groups. Similar results were reported by Basciftci *et al.* (2003). From the results of the current study, it may be concluded that the Turkish men had shorter and more prominent lips as an ethnic characteristic.

#### *Lower lip position and contour*

It may be concluded that Turkish males have protrusive lower lips compared to North American males but statistically significant differences were not found between groups. Erbay *et al.* (2002) evaluated lower lip position relative to the H line in groups with normal dentitions. This measurement was -0.4 mm for males and 0.2 mm for

**Table 2** Comparison between Turkish and North American males.

| Analysis                                       | Turkish males ( <i>n</i> = 52) |      | North American males ( <i>n</i> = 52) |      | <i>P</i> |
|--|--------------------------------|------|---------------------------------------|------|----------|
|  | Mean                           | SD   | Mean                                  | SD   |          |
| Holdaway analysis                              |                                |      |                                       |      |          |
| Soft tissue facial angle                       | 92.9                           | 2.7  | 94.9                                  | 2.8  | 0.000    |
| Nose prominence                                | 15.3                           | 3.4  | 16.0                                  | 3.3  | 0.342    |
| Superior sulcus depth                          | 3.7                            | 1.4  | 3.2                                   | 1.8  | 0.114    |
| Soft tissue subnasale to H line                | 5.5                            | 2.7  | 3.7                                   | 3.5  | 0.004    |
| Skeletal profile convexity                     | 0.4                            | 2.9  | 1.4                                   | 2.9  | 0.090    |
| Basic upper lip thickness                      | 19.0                           | 2.7  | 18.0                                  | 2.6  | 0.072    |
| Upper lip thickness                            | 15.2                           | 2.3  | 14.8                                  | 3.3  | 0.480    |
| Upper lip strain                               |                                |      |                                       |      |          |
| H angle  | 14.0                           | 3.7  | 10.9                                  | 4.2  | <0.001   |
| Lower lip to H line                            | 0.5                            | 1.8  | -0.2                                  | 1.7  | 0.030    |
| Inferior sulcus to H line                      | 6.8                            | 1.8  | 6.3                                   | 2.0  | 0.222    |
| Soft tissue chin thickness                     | 13.9                           | 2.1  | 15.2                                  | 3.2  | 0.021    |
| Epker soft tissue                              |                                |      |                                       |      |          |
| Middle third height:lower third height         | 99.3                           | 9.8  | 96.7                                  | 7.5  | 0.134    |
| Upper lip length                               | 24.4                           | 3.0  | 26.9                                  | 3.8  | <0.001   |
| Subnasale-stomion:stomion-menton               | 45.8                           | 6.2  | 45.5                                  | 4.7  | 0.779    |
| Subnasale-lower lip:lower lip-menton           | 80.2                           | 13.3 | 68.3                                  | 9.6  | <0.001   |
| Interlabial distance                           | 1.1                            | 1.6  | 0.7                                   | 0.9  | 0.185    |
| Subnasale perpendicular to Up                  | 2.2                            | 2.3  | 1.7                                   | 2.4  | 0.310    |
| Subnasale perpendicular to Lo                  | -0.5                           | 2.8  | -0.1                                  | 2.6  | 0.427    |
| Subnasale perpendicular to chin                | 5.8                            | 6.2  | 5.0                                   | 5.6  | 0.473    |
| Legan-Burstone analysis                        |                                |      |                                       |      |          |
| Facial form                                    |                                |      |                                       |      |          |
| Facial convexity angle G-Sn-Pg' angle          | 12.1                           | 5.8  | 10.4                                  | 4.9  | 0.106    |
| Maxillary prognathism G-Sn (HP), mm            | 6.1                            | 4.9  | 8.4                                   | 5.1  | 0.024    |
| Mandibular prognathism G-Pg' (HP), mm          | -1.4                           | 8.5  | 3.5                                   | 7.8  | 0.003    |
| Vertical height ratio G-Sn/Sn-Me' (HP)         | 1.0                            | 0.1  | 1.0                                   | 0.1  | 0.255    |
| Lower face-throat angle Sn-Gn'-C dg            | 104.9                          | 11.8 | 105.5                                 | 9.7  | 0.765    |
| Lower vertical height-Sn-Gn'/C-Gn' depth ratio | 1.8                            | 1.8  | 1.4                                   | 0.2  | 0.053    |
| Lip position                                   |                                |      |                                       |      |          |
| Nasolabial angle Cm-Sn-Ls dg                   | 102.9                          | 10.5 | 112.6                                 | 10.6 | <0.001   |
| Upper lip protrusion Ls to Sn-Pg', mm          | 4.0                            | 1.9  | 2.6                                   | 2.4  | 0.002    |
| Lower lip protrusion Li to Sn-Pg', mm          | 3.0                            | 2.3  | 1.5                                   | 2.3  | 0.002    |
| Mentolabial sulcus Si to Li-Pg', mm            | -7.0                           | 1.3  | -6.2                                  | 1.6  | 0.004    |
| Vertical lip-chin ratio Sn-Stms/Stmi-Me'       | 51.1                           | 5.0  | 53.2                                  | 5.2  | 0.034    |
| Maxillary incisor exposure Stms-UI, mm         | 2.3                            | 2.1  | 3.0                                   | 2.3  | 0.127    |
| Interlabial gap Stms-Stmi HP, mm               | 1.1                            | 1.6  | 0.7                                   | 0.9  | 0.185    |

females. According to the findings of Basciftci *et al.* (2003), these measurements were -0.1 and 0.1 mm, respectively. In the present study, these values are 0.5 mm for males and 0.7 mm for females. The mentolabial sulcus relative to lower lip pogonion line measurement showed that mentolabial sulcus depth was increased in the Turkish sample.

#### *Nose prominence and nasolabial angle*

No statistically significant difference existed for nose prominence. The findings for nose prominence in the current investigation were distinctly different from those of Basciftci *et al.* (2003) that showed more prominent noses for Turkish individuals. The nasolabial angle was decreased in Turkish samples for both genders.

The findings from this study are important from two perspectives. Firstly, when using Caucasian soft tissue norms to analyse a Turkish patient cephalometrically, the practitioner must consider the Turkish culture's view of soft

tissue facial aesthetics and try to incorporate and maintain these soft tissue features in the treatment plan. Secondly, when a Turkish practitioner is treating a Caucasian, he/she must consider the cultural bias he/she may have in soft tissue aesthetics. For example, while the practitioner may favour short, thicker, and more protrusive lips, the Caucasian adult he/she is treating may not find such a feature to be aesthetically pleasing. Ideally, any array of cephalometric norms should be ethnically specific so that patients can have aesthetic faces according to their own culture's concept of beauty.

#### **Conclusions**

According to the results of this study, there are important soft tissue differences between Turkish and European-Americans. The most important differences when comparing a Turkish patient to an American patient of European ancestry is that Turkish patients have



- More convex soft tissue facial profiles,
- More retrognathic and thinner soft tissue chins,
- More protrusive and shorter upper and lower lips (for males only),
- These differences may be taken into account when Turkish patients treated according to Caucasian norms.

## Funding

Erciyes University, Unit of Scientific Research Project (EUBAP, DHA-07-04).

## References

- Bacon W, Girardin P, Turlot J C 1983 A comparison of cephalometric norms for the African Bantu and a Caucasoid population. *European Journal of Orthodontics* 5: 233–240
- Bacon W, Mathis R 1983 Normal craniofacial architecture of the Cameroonian and of the Senegalese. *Tropical Dental Journal* 6: 75–83
- Basciftci F A, Uysal T, Buyukerkmen A 2003 Determination of Holdaway soft tissue norms in Anatolian Turkish adults. *American Journal of Orthodontics and Dentofacial Orthopedics* 123: 395–400
- Behrents R G 1985 Growth in the aging craniofacial skeleton. Monograph 17, Craniofacial Growth Series. Center for Human Growth and Development, The University of Michigan, Ann Arbor
- Bishara S E, Fernandez A G 1985 Cephalometric comparisons of the dentofacial relationships of two adolescent populations from Iowa and Northern Mexico. *American Journal of Orthodontics* 88: 314–322
- Bishara S E, Jakobsen J R 1985 Longitudinal changes in three normal facial types. *American Journal of Orthodontics* 88: 466–502
- Bishara S E, Jakobsen J R, Hession T J, Treder J E 1998 Soft tissue profile changes from 5 to 45 years of age. *American Journal of Orthodontics and Dentofacial Orthopedics* 114: 698–706
- Broadbent B H St, Broadbent B H Jr., Golden W H 1975 Bolton standards of dentofacial development growth. Mosby, St Louis
- Buschang P H, Tangnay R, Turkewicz J, Demirjian A, LaPalme L 1986 A polynomial approach to craniofacial growth: description and comparison of adolescent males with normal occlusion and those with untreated Class III malocclusion. *American Journal of Orthodontics and Dentofacial Orthopedics* 90: 437–442
- Cerci V, Martins J E, de Oliveira M A 1993 Cephalometric standards for white Brazilians. *International Journal of Adult Orthodontics and Orthognathic Surgery* 8: 287–292
- Cooke M S, Wei S H Y 1988 Cephalometric “standards” for the southern Chinese. *European Journal of Orthodontics* 10: 264–272
- Craven A H 1958 A radiographic cephalometric study of central Australian aborigine. *Angle Orthodontist* 28: 12–35
- Downs W B 1948 Variation in facial relationships: their significance, treatment and prognosis. *American Journal of Orthodontics* 34: 812–840
- Epker B N, Stella J P, Fish L C 1998 Dentofacial deformities: integrated orthodontic and surgical correction. Mosby, St Louis, pp. 29–33
- Erbay E F, Caniklioglu C M 2002 Soft tissue profile in Anatolian Turkish adults: Part II. Comparison of different soft tissue analyses in the evaluation of beauty. *American Journal of Orthodontics and Dentofacial Orthopedics* 121: 65–72
- Erbay E F, Caniklioglu C M, Erbay S K 2002 Soft tissue profile in Anatolian Turkish adults: Part I. Evaluation of horizontal lip position using different soft tissue analyses. *American Journal of Orthodontics and Dentofacial Orthopedics* 121: 57–64
- Evanko A M, Freeman K, Cisneros G J 1997 Mesh diagram analysis: developing a norm for Puerto Rican Americans. *Angle Orthodontist* 67: 381–388
- Flynn T R, Ambrogio R I, Zeichner S J 1989 Cephalometric norms for orthognathic surgery in black American adults. *Journal of Oral and Maxillofacial Surgery* 47: 30–39
- Göyenc Y, Karadede M I, Sener E, Baran S 1992 Dişsel Cİ I, iskeletsel Cİ I, Cİ II, Cİ III ilişkili bireylerde yumuşak doku değişimleri (abstract in English). *Türk Ortodonti Dergisi* 5: 117–125
- Hamdan A M, Rock W P 2001 Cephalometric norms in an Arabic Population. *Journal of Orthodontics* 28: 297–300
- Holdaway R A 1983 A soft-tissue cephalometric analysis and its use in orthodontic treatment planning. Part I. *American Journal of Orthodontics* 84: 1–28
- Humerfelt A 1970 A roentgenographic cephalometric investigation of Norwegian children with normal occlusion. *Scandinavian Journal of Dental Research* 78: 117–143
- Hwang H S, Kim W S, McNamara J A Jr. 2002 Ethnic differences in the soft tissue profile of Korean and European-American adults with normal occlusion and well-balanced faces. *Angle Orthodontist* 72: 72–80
- Jacobson A 1978 The craniofacial skeleton of the South African Negro. *American Journal of Orthodontics* 73: 681–691
- Kapila S 1989 Selected cephalometric norms in Kikuy children. *Angle Orthodontist* 59: 139–144
- Legan H L, Burstone C J 1980 Soft tissue cephalometric analysis for orthognathic surgery. *Journal of Oral Surgery* 38: 744–751
- Lew K K, Ho K K, Keng S B, Ho K H 1992 Soft-tissue cephalometric norms in Chinese adults with esthetic facial profiles. *Journal of Oral and Maxillofacial Surgery* 50: 1184–1189
- Miyajima K, McNamara J A Jr., Kimura T, Murata S, Iizuka T 1996 Craniofacial structure of Japanese and European-American adults with normal occlusions and well-balanced faces. *American Journal of Orthodontics and Dentofacial Orthopedics* 110: 431–438
- Nanda R, Nanda R S 1969 Cephalometric study of the dentofacial complex of north Indians. *Angle Orthodontist* 39: 22–28
- Park I C, Bowman D, Klapper L 1989 A cephalometric study of Korean adults. *American Journal of Orthodontics and Dentofacial Orthopedics* 96: 54–59
- Prahl-Anderson B P, Kowalski C J, Heydendaal P H J M 1979 A mixed-longitudinal interdisciplinary study of growth and development. Academic Press, New York
- Ricketts R M 1960 The influence of orthodontic treatment on facial growth and development. *Angle Orthodontist* 30: 103–133
- Riolo M L, Moyers R F, McNamara J A Jr., Hunter W S 1974 An atlas of craniofacial growth: cephalometric standards from the University School Growth Study, the University of Michigan. Monograph 2, Craniofacial Growth Series. Center for Human Growth and Development, The University of Michigan, Ann Arbor
- Scavone H, Trevisan H, Garib D G, Ferreira F V 2006 Facial profile evaluation in Japanese-Brazilian adults with normal occlusions and well-balanced faces. *American Journal of Orthodontics and Dentofacial Orthopedics* 129: 721.e1–721.e5
- Shalhboub S Y, Sahran O A, Shaikh H S 1987 Adult cephalometric norms for Saudi Arabians with a comparison of values for Saudi and North American Caucasians. *British Journal of Orthodontics* 14: 273–279
- Steiner C C 1953 Cephalometrics for you and me. *American Journal of Orthodontics* 39: 729–755
- Swlerenga D, Oesterle L J, Massersmith M L 1994 Cephalometric values for adult Mexican-American. *American Journal of Orthodontics and Dentofacial Orthopedics* 106: 146–155
- Tweed C H 1953 Evolutionary trends in orthodontics, past present and future. *American Journal of Orthodontics* 39: 81–108
- Tweed C H 1954 The Frankfort mandibular incisal angle in orthodontic diagnosis. *Angle Orthodontist* 20: 121–169
- Uesato G, Kinoshita Z, Kawamoto T, Koyama I, Nakanishi Y 1978 Steiner cephalometric norms for Japanese and Japanese Americans. *American Journal of Orthodontics* 73: 321–327
- Wylie W L 1947 The assessment of anteroposterior dysplasia. *Angle Orthodontist* 1: 97–109

Copyright of European Journal of Orthodontics is the property of Oxford University Press / UK and its content may not be copied or emailed to multiple sites or posted to a listserv without the copyright holder's express written permission. However, users may print, download, or email articles for individual use.