

Perspectives

THE JOURNAL OF ESTHETIC AND RESTORATIVE DENTISTRY INTRODUCES NEW BENEFIT FOR AUTHORS

As part of our continuing efforts to support both authors and reviewers, we are pleased to announce that the *Journal of Esthetic and Restorative Dentistry* has adopted a Web-based submission and peer review system, ScholarOne Manuscripts. All new manuscript submissions should now be made at <http://mc.manuscriptcentral.com/jerd>. We trust that this system will be quick and convenient for both authors and reviewers and will enable us to reduce the time it takes to make a decision on a manuscript by reducing postal and other delays throughout the editorial process.

Manuscript submission is a step-by-step process needing little special preparation other than having all parts of the manuscript in an electronic format and having access to a computer with an Internet connection and a Web browser. To submit a manuscript to the *Journal of Esthetic and Restorative Dentistry*, authors should go to <http://mc.manuscriptcentral.com/jerd>, where they can upload the manuscript and any other material they would like to communicate to the editor. Full help

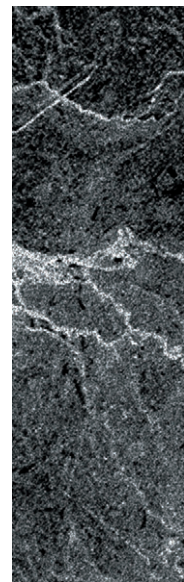
and instructions are provided on-screen. As an author, you will be prompted for author and manuscript details and then to upload your manuscript file(s). In order to ensure that your manuscript conforms to journal style, please consult the "Instructions and Forms" located at the back of every issue, or the "Author Guidelines," which can be found on the journal's homepage at <http://www.wiley.com/jerd>. *[Please remember that we review "blind," so that neither authors nor reviewers know each others' identity. To this end, please do not identify yourself, your colleagues, or institution within the submitted files; instead, give your details during the submission process.]*

In the future, all correspondence will be by e-mail. A completed submission is confirmed by e-mail immediately and your paper will then enter the editorial process. Your manuscript will have a unique manuscript number and you can check the progress of your manuscript at any time by returning to <http://mc.manuscriptcentral.com/jerd>. When a decision is made, revisions

can be submitted online, with an opportunity to view and respond to all comments.

Manuscript review will also be handled online. Reviewers will be given full instructions and access to the paper at <http://mc.manuscriptcentral.com/jerd>. The review form and comments can be completed online and immediately made available to the journal and the editor.

Full support for both authors and reviewers is provided. Each page of the Web site has a "Get Help Now" icon connecting directly to the online support system at <http://mchelp.manuscriptcentral.com>. For further guidance, please consult the "Instructions to Contributors," which is located at the back of every issue, or the "Author Guidelines," which can be found at <http://www.wiley.com/jerd>. If you do not have Internet access or cannot submit online, the Editorial Office will help with online submissions; please contact Betty



Cates in the Editorial Office by
e-mail: betty_cates@dentistry.unc.edu.

In addition to introducing our authors to ScholarOne Manuscripts, we would like to take this opportunity to remind you of the services provided by Wiley-Blackwell. Among other services provided by Wiley-Blackwell's Author Services, the production tracking option enables you to track your article—once it has been accepted—through the production process to publication online and in print. You can check the status of your article(s) online

and choose to receive automated e-mails at key stages of production so you do not need to contact the journal editor to check on progress. Registered authors benefit from free access to the full text of their paper(s) (in PDF format) on Wiley *Interscience*, as well as a 25% discount on publications. More information on this service can be found at the Author Services Web site: <http://authorservices.wiley.com>.

We hope that authors and reviewers will find that the new electronic submission system makes their lives easier, and we look forward

to the new system streamlining the review process, leading to rapid decision making, and ensuring that the time from submission to publication is as short as possible. We invite you to take advantage of Wiley-Blackwell's Author Services, and thank you for your continued support of the *Journal of Esthetic and Restorative Dentistry*!

Kaia Motter

Editor of Health Sciences, Wiley-Blackwell.
Reprint requests: Kaia Motter, 350 Main Street, Malden, MA 02148, USA; email: kmotter@wiley.com

Copyright of Journal of Esthetic & Restorative Dentistry is the property of Wiley-Blackwell and its content may not be copied or emailed to multiple sites or posted to a listserv without the copyright holder's express written permission. However, users may print, download, or email articles for individual use.