

# Errata

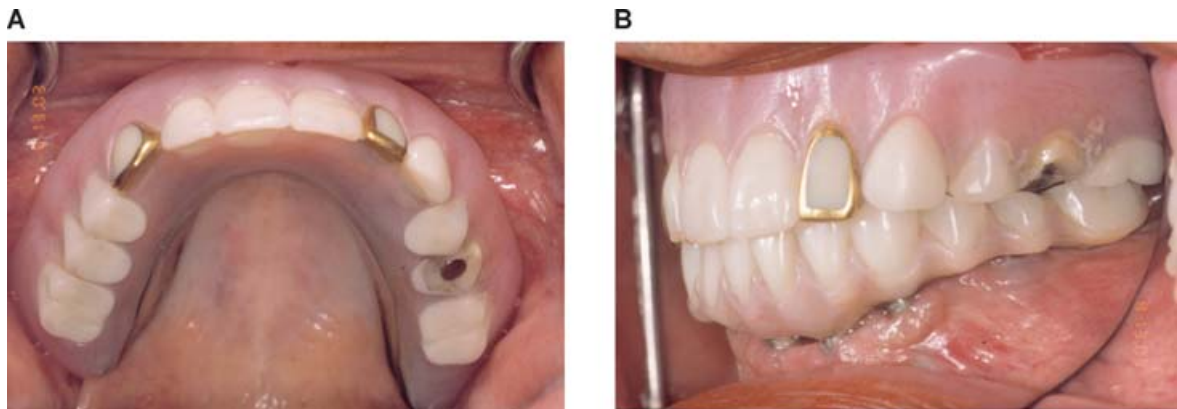
Okhubo C, Shimura I, Aoki T, et al: In vitro wear assessment of titanium alloy teeth. *J Prosthodont* 2002;11:263-269.

The article cited above erroneously labeled Figures 4 and 6. The micrographs in these figures were switched. The photo appearing in Figure 4 is actually Figure 6, and the photo appearing in Figure 6 is actually Figure 4.

---

In the September 2005 issue of *Journal of Prosthodontics* (Vol.14 No. 3), the right side of the cover image was inadvertently distorted during the typesetting process. Below is the image as it should have appeared on the cover. Blackwell Publishing regrets the error.

**Cover photo:** Fractured second premolar; inadequate vertical intermaxillary space. From The Role of Abutment-Attachment Selection in Resolving Inadequate Interarch Distance: A Clinical Report by Alsiyabi, et al. (*J. Prosthodont* 2005;14:184–190).



Copyright of Journal of Prosthodontics is the property of Blackwell Publishing Limited and its content may not be copied or emailed to multiple sites or posted to a listserv without the copyright holder's express written permission. However, users may print, download, or email articles for individual use.

Copyright of Journal of Prosthodontics is the property of Blackwell Publishing Limited and its content may not be copied or emailed to multiple sites or posted to a listserv without the copyright holder's express written permission. However, users may print, download, or email articles for individual use.