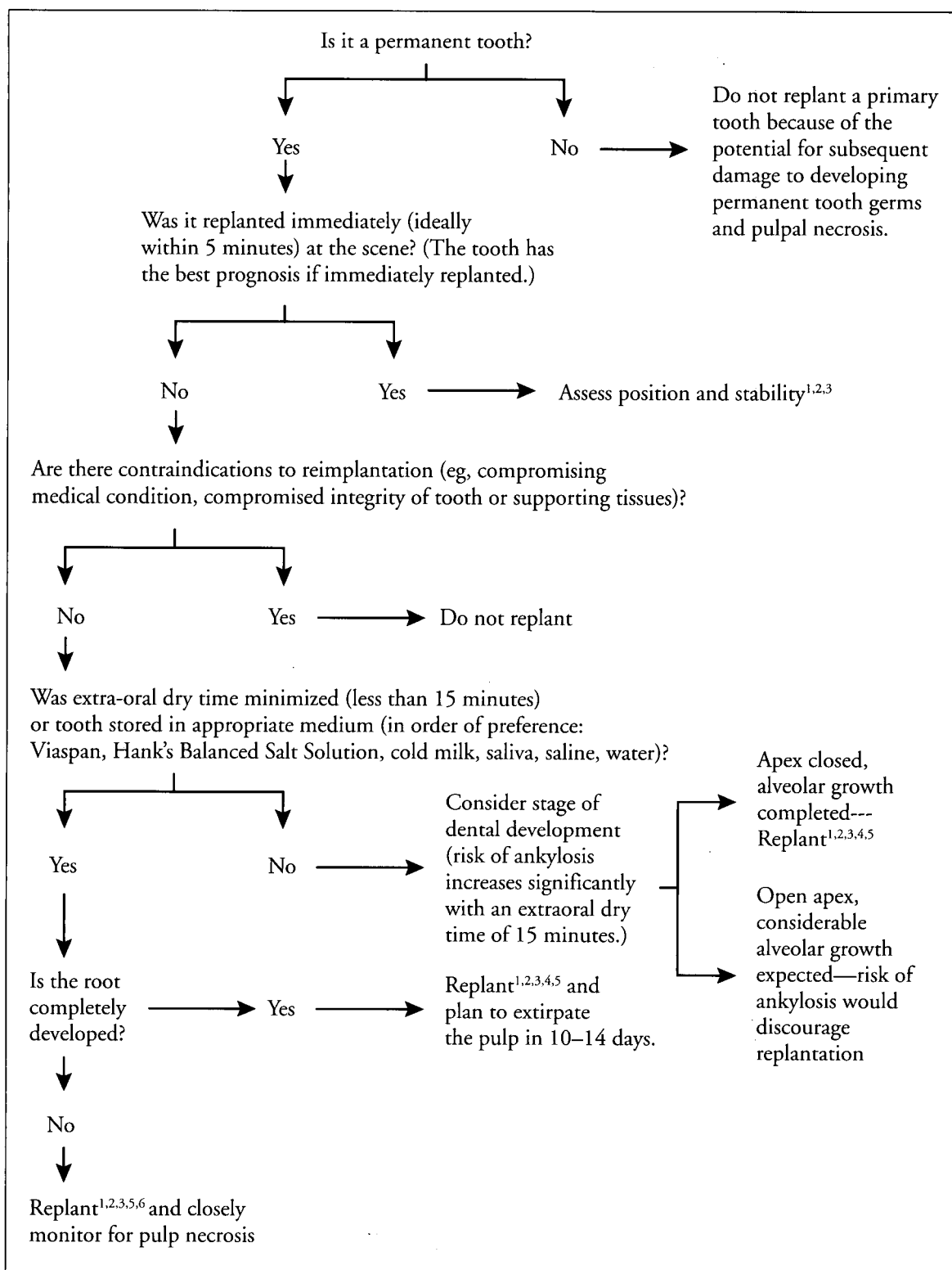


## Decision Tree for an Avulsed Tooth



1. Obtain a radiograph to verify position
2. Flexible splinting for 7 days is indicated. Additional splinting may be required with concomitant bone fracture.
3. Consideration should be given to antibiotic therapy and tetanus immunization.
4. Use of a root surface preconditioning protocol may help delay/prevent the expected replacement resorption process.
5. Holding the tooth by the crown, irrigate with sterile saline and gently replant with digital pressure.
6. Use of a preconditioning protocol may enhance pulp revascularization.

Copyright of Pediatric Dentistry is the property of American Society of Dentistry for Children and its content may not be copied or emailed to multiple sites or posted to a listserv without the copyright holder's express written permission. However, users may print, download, or email articles for individual use.