

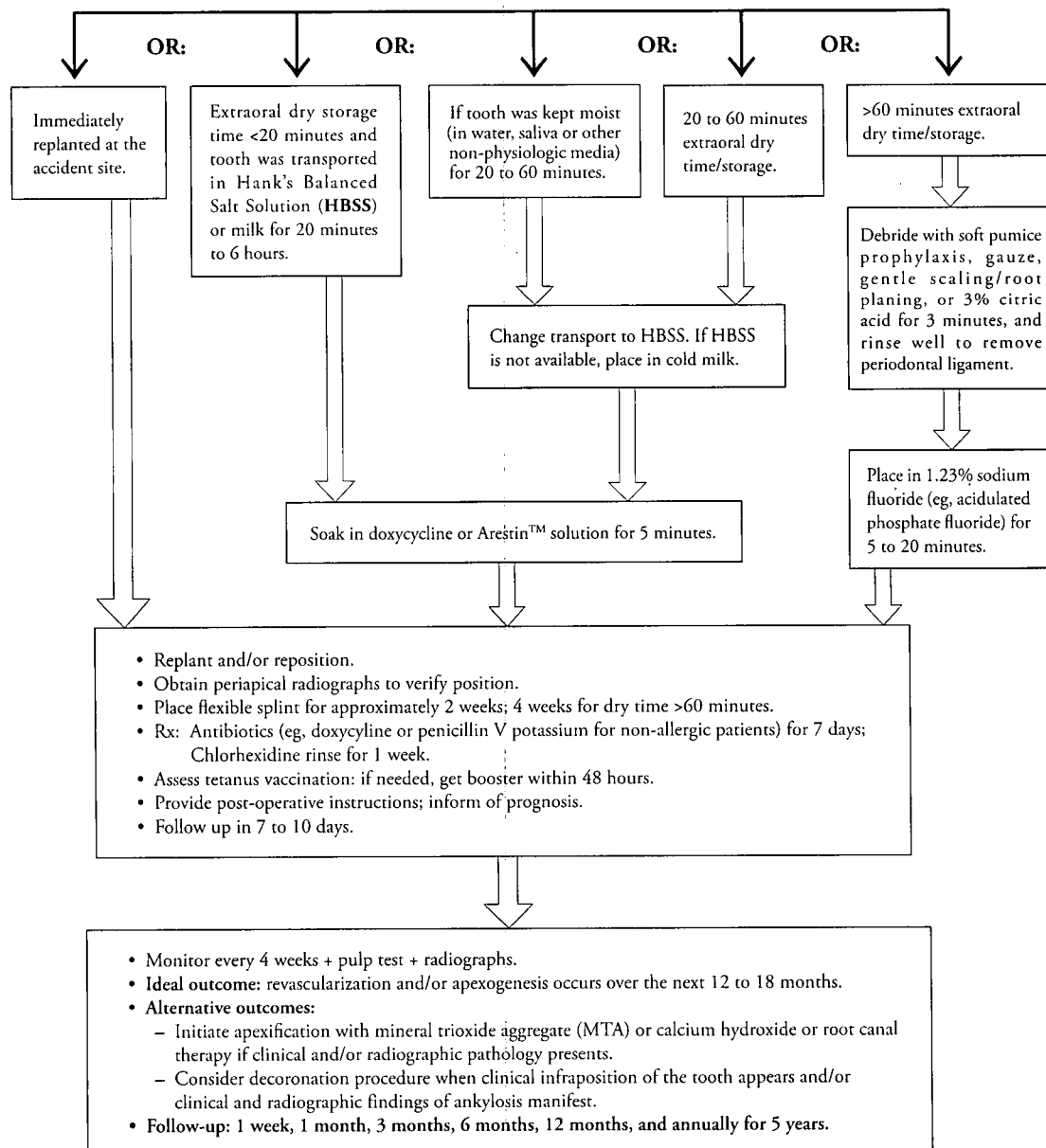
Decision Trees for Management of an Avulsed Permanent Tooth

Management of an Avulsed Permanent Incisor with an Open Apex (Apex ≥ 1 mm)*

Assess medical history and rule out any neurologic and nondental injuries.

Diagnostic tests:

- Rule out alveolar fracture.
- 3 radiographs angulated differently to rule out root fractures.
- Pulp vitality test maxillary and mandibular anteriors.



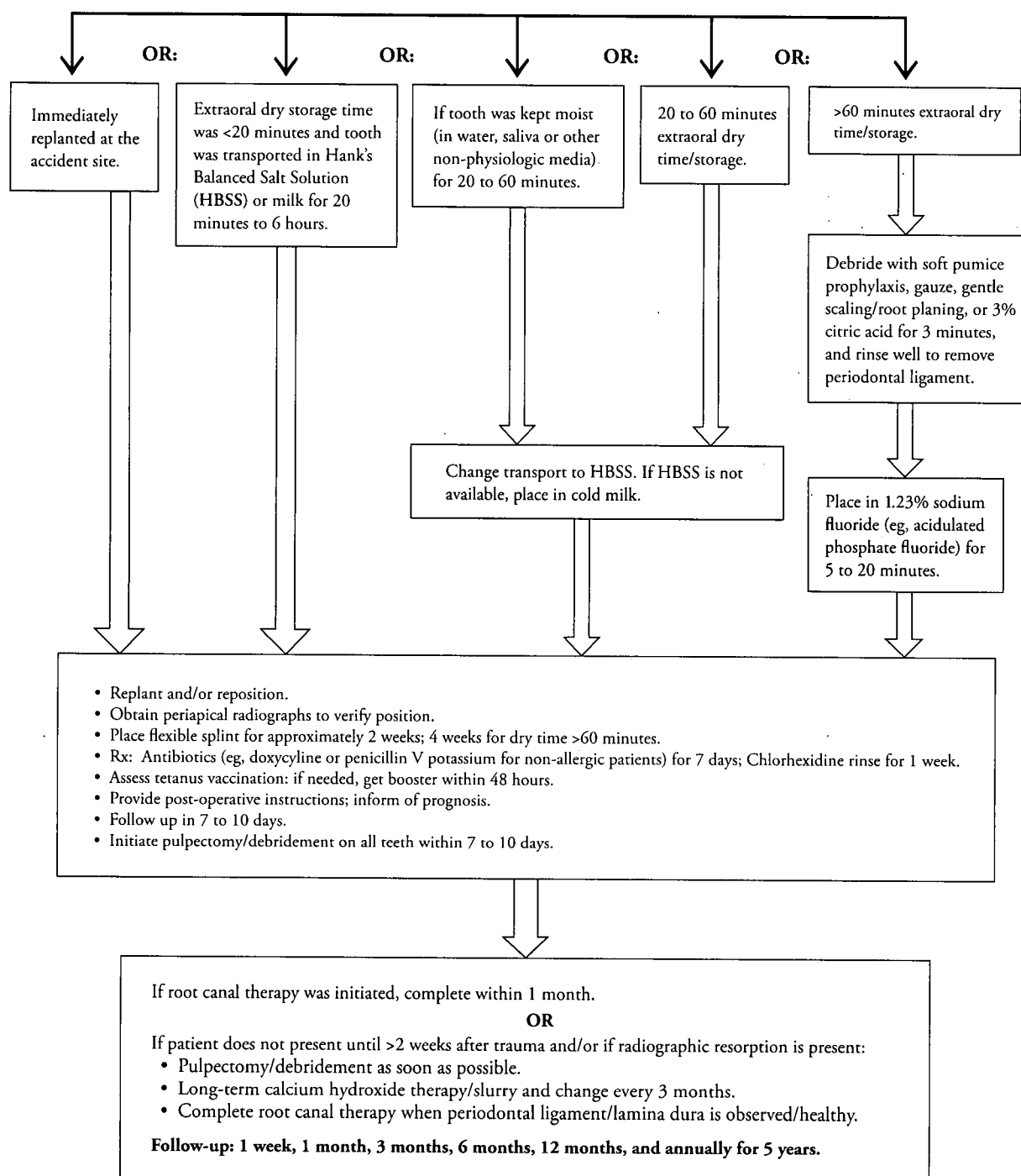
* Adapted with permission from: McIntyre J, Lee J, Trope M, Vann WJ. Permanent tooth replantation following avulsion: Using a decision tree to achieve the best outcome. *Pediatr Dent* 2009;31(2):137-44.

Management of an Avulsed Permanent Incisor with an Closed Apex (Apex <1 mm)*

Assess medical history and rule out any neurologic and nondental injuries.

Diagnostic tests:

- Rule out alveolar fracture.
- 3 radiographs angulated differently to rule out root fractures.
- Pulp vitality test maxillary and mandibular anteriors.



* Adapted with permission from: McIntyre J, Lee J, Trope M, Vann WJ, Permanent tooth replantation following avulsion: Using a decision tree to achieve the best outcome. *Pediatr Dent* 2009;31(2):137-44.

Copyright of Pediatric Dentistry is the property of American Society of Dentistry for Children and its content may not be copied or emailed to multiple sites or posted to a listserv without the copyright holder's express written permission. However, users may print, download, or email articles for individual use.