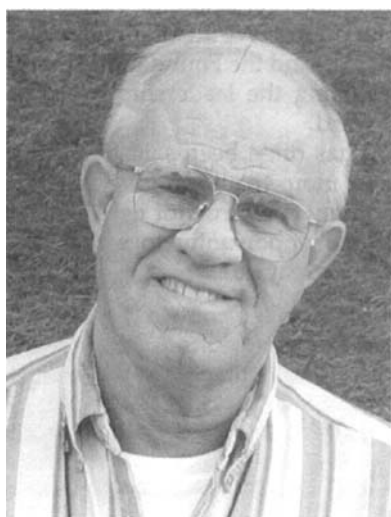


## Archives

### Steven P. Geiermann, DDS

#### Retirement

**Thomas G. Reeves, PE**, retired after 33 years of government service. After spending three years in the army, Tom received his master's in environmental engineering from the University of Kansas. After six years of service with the Environmental Protection Agency, he transferred to the Centers for Disease Control and Prevention (CDC) in 1979. In his 24 years with the CDC as a national fluoridation engineer, Tom assisted states and communities in implementing water fluoridation programs for the prevention of tooth decay. He developed training manuals and courses for state fluoridation personnel. During his tenure with the CDC, the population in the United States benefiting from water fluoridation grew from an estimated 105 million to 162 million. Tom also provided technical assistance to a number of countries on the engineering aspects of fluoridation, thus helping extend this public health benefit to additional populations.



Thomas G. Reeves

#### Appointment

The National Institutes of Health (NIH) Roadmap is underway and Dr. Elias A. Zerhouni, the director of NIH,

has begun to assemble a team to coordinate its implementation and related activities. As part of this effort, he has appointed **Dr. Dushanka V. Kleinman**, deputy director of the National Institute of Dental and Craniofacial Research, to serve as the assistant director for Roadmap coordination, beginning December 15, 2003. During this initial six-month detail, Dr. Kleinman will work closely with the NIH Roadmap Implementation Coordination Committee, designated NIH Roadmap liaisons, the senior adviser for clinical research reengineering activities, and senior staff within the office of the director to facilitate policy development and key decisions related to Roadmap implementation. In addition, a team of advisers will be formed to address key aspects such as monitoring, communication, and evaluation. Dr. Kleinman will continue in her role as chief dental officer for the US Public Health Service during this time.

Soon after becoming the director of NIH, in May 2002, Dr. Zerhouni convened a series of meetings to chart a "roadmap" for medical research in the 21st century. The purpose was to identify major opportunities and gaps in biomedical research that no single institute at NIH could tackle alone, but that the agency as a whole must address to make the biggest impact on the progress of medical research. The opportunities for discoveries have never been greater, but the complexity of biology remains a daunting challenge. NIH is uniquely positioned to catalyze changes that must be made to transform our new scientific knowledge into tangible benefits for people.

#### Promotion

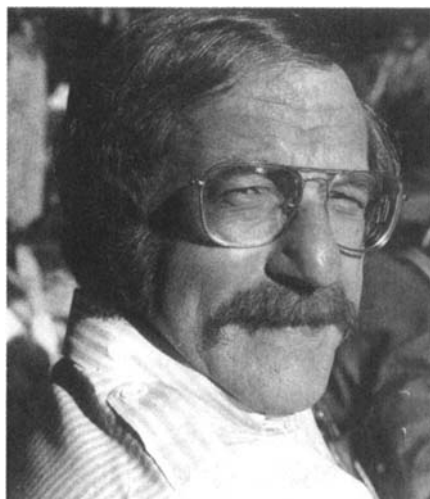
**Captain Lireka P. Joseph** was promoted to Rear Admiral in the US Public Health Service on November 1, 2003. RADM Joseph joined the Food and Drug Administration (FDA) in 1979 when she was employed by the Bureau of Radiological Health. She has continued to work within that area



Lireka P. Joseph

even after the Bureau of Radiological Health merged with the Bureau of Medical Devices to become the Center for Devices and Radiological Health. Her experiences within federal employment have been enriched by many special assignments, including: an assignment with the CDC that pertained to the Surgeon General's Report on Smokeless Tobacco, serving as executive secretary to the committee that assessed the oral health effects of smokeless tobacco; a three-year period as special assistant to the deputy commissioner for operations in the FDA's Office of the Commissioner; and serving as the interim division director for the Division of Mammography Quality and Radiation Programs when the Mammography Quality and Standards Act was first implemented. Prior to joining the FDA, RADM Joseph taught in community dentistry departments in five US dental schools and served as a dental health consultant within the Michigan Department of Health.

*[Editor's Note: We sadly note that RADM Lireka P. Joseph died on February 17, 2004, as this issue of the JPHD was in production. A full obituary will appear in the next issue.]*



Samuel J. Wycoff

### Obituary

**Samuel J. Wycoff, DMD, MPH**, an emeritus professor of dentistry and public health at UCSF, died September 19, 2003, at his San Francisco home at the age of 74. Born in Berry, AL, Dr. Wycoff graduated from the University of Alabama and opened his own dental practice in Jackson, MS. Soon after, his passion of promoting public health and proper dental care prompted him to leave private practice behind. After earning an MPH from the University of Michigan, Dr. Wycoff became a regional program director for dental health for the US Public Health Service. Subsequently, he turned his attention to academics and became professor and chairperson of the Department of Preventive Dentistry and Community Health at Loyola University in Chicago.

In 1969 Dr. Wycoff moved to San Francisco to become the first chairperson of the Division of Preventive Dentistry and Community Health at the UCSF School of Dentistry. "Many of the faculty did not understand what

Sam was doing and resisted the concept of community dentistry," said Steve Silverstein, a professor at the UCSF School of Dentistry. Nevertheless, Dr. Wycoff continued to champion the idea that educating people about the importance of dental hygiene had a critical impact on public health. As a result of this dedication, he received numerous academic and professional awards for his work. Dr. Charles Bertolami, dean of the UCSF School of Dentistry, described Dr. Wycoff as "a compassionate and caring individual who left an important legacy for the entire dental profession."

Dr. Wycoff was a pioneer in the early days of the HIV epidemic, conducting research into health care practitioners' infection control techniques and attitudes about treating patients with AIDS. He helped create protocols used to assess the dental needs of geriatric patients in long-term care.

Dr. Wycoff is survived by his sister-in-law, Frances Wycoff of Concord, NC, and many nieces and nephews, who are the children of his late siblings, Eugene and Virginia. Memorial gifts can be directed to UCSF Foundation for the Sam Wycoff Memorial Fund for Dental Public Health, 745 Parnassus Avenue, Box 0970, San Francisco, CA 94143-0970.

### Congratulations

MESA, ARIZONA (November 17, 2003)—The Western Interstate Commission for Higher Education (WICHE) announced the addition of the **Arizona School of Dentistry and Oral Health** (ASDOH) to the commission's roster of programs available to students through its Professional Student Exchange Program (PSEP). Beginning in fall 2004, ASDOH will be eligible to receive PSEP students from the states of Alaska, Arizona, Hawaii, Montana, Nevada, New Mexico,

North Dakota, and Wyoming. "It is gratifying that WICHE recognized the quality of our dental education program by granting an exception allowing ASDOH to accept WICHE scholars three years ahead of schedule," exclaimed ASDOH Dean Jack Dillenberg. "Arizona's WICHE applicants can receive up to a \$16,500 annual scholarship for a commitment to practice in Arizona after graduation."

The Mesa, AZ-based and accredited ASDOH, which enrolled its inaugural class in 2003, offers an innovative curriculum designed to prepare students to become high-quality practitioners. In addition, the four-year program allows students to earn a certificate in public health management, helping them focus on care needed by underserved communities in the Southwest, rural West, and in Native American communities. ASDOH students will provide dental care during their fourth year of education in community settings including community health centers, veterans hospitals, Luke Air Force Base, and other locations throughout Arizona and nationwide.

Western Interstate Commission for Higher Education works collaboratively to expand educational access and excellence for all citizens of the West. By promoting innovation, cooperation, resource sharing, and sound public policy among states and institutions, WICHE strengthens higher education's contributions to the region's social, economic, and civic life. The Professional Student Exchange Program is the oldest of WICHE's exchange programs, launched in the 1950s. Through PSEP, students pursuing their professional education out of state pay resident tuition or reduced tuition at private institutions. PSEP currently enrolls 710 students in 13 fields.